



കേരള ജല അതോറിറ്റി

NEYYATTINKARA

JULY

Report Generated at 04/10/2025 11:28:17

Rank -12

Name of Executive Engineer

Sri. Jayakumar P

Name of Revenue officer

Biju Kumar K

CONNECTIONS AS ON AS ON JULY :

1,83,382

ARREARS IN CRORE AS ON JULY :

21.03

ARREARS

STATE GOVERNMENT

CENTRAL GOVERNMENT

PSU

OTHERS

LSGD

46,28,856

40,154

1,53,858

-275,904,545

27,10,81,677

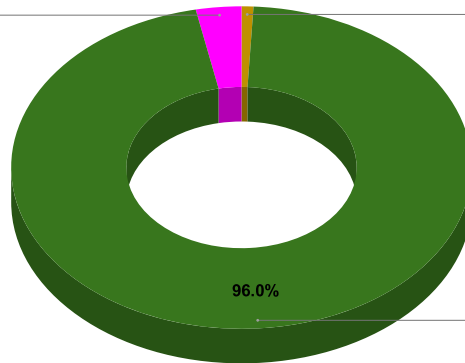
ARREAR BREAK UP INCLUDING LSGD

PSU

3.2%

Central Gov

0.8%



State Gov

96.0%

ARREARS INCLUDING LSGD

Municipality

6.3%

Domestic (D)

29.4%

Panchayath WC-Street Taps

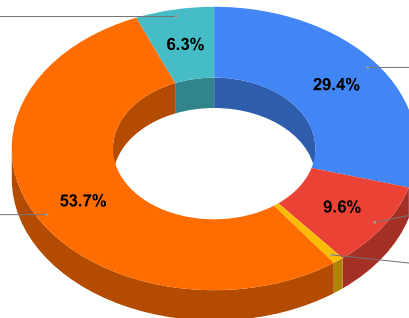
53.7%

Non Domestic (N)

9.6%

Special (S)

0.9%



DOMESTIC	NON DOMESTIC	INDUSTRIAL	SPECIAL	Bulk Supply	Panchayath WC-Street Taps	Municipality WC -Street Taps	Corporation WC -Street Taps
13,28,75,124	4,34,64,193	13,74,800	40,15,412	0	24,26,24,250	2,84,57,427	0

ARREARS WITH OUT LSGD

Special (S)

2.2%

Non Domestic (N)

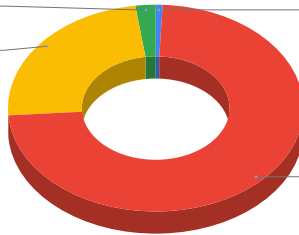
23.9%

Industrial (I)

0.8%

Domestic (D)

73.1%



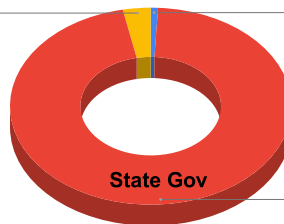
ARREAR BREAK UP WITH OUT LSGD

PSU

3.2%

Central Gov

0.8%

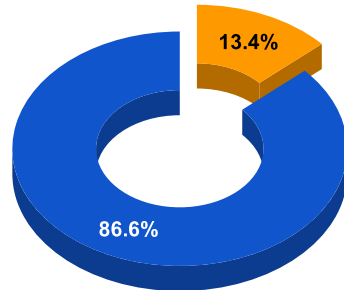


TOP DEFAULTERS OF NEYYATTINKARA FOR THE MONTH OF JULY

SL NO	NAME	ARREAR
1	THE SECREATARY, CORPORATION, 0471 2320821, THIRUVANANTHAPURAM, RAY OFFICE CO OPERATION BUILDING II nd F	16,47,864
2	THE HEADMASTER, GOVT G.H.S., PARASSALA,	16,17,981
3	SREEDHARA PANIKER, MELVILAKATHU VEEDU, THEVARAVILA IRUMBIL NEYYATTINKARA P O, 9495391006	10,36,631
4	THE PRESIDENT, KARICHAL, MAHILA SAMAJAM,	9,82,064
5	CIRCLE INSPECTOR OF POLICE, A.R. QUARTERS, NTA,	9,72,240
6	THE MANAGER, ST.JOSEPH L.P.S, CHOWARA.P. O, .	8,96,420
7	MANAGER BFMS, LPS, AVANAKUZH, .	8,79,129
8	THE SECRARTARY, KAZHIVOOR POWER LOOM SOCIETY, , ,	8,45,852
9	DAICY, KARUMKATTUVILA VEEDU, VENNIYOOR, .	8,39,632
10	INSPECTOR OF POLICE, QUARTERS,NTA, ,	7,53,180

BPL DATA

BPL CONNECTIONS AS % OF TOTAL LIVE CONNECTIONS



● BPL CONNECTIONS ● TOTAL LIVE CONNECTIONS

TOTAL NO OF BPL CONNECTIONS

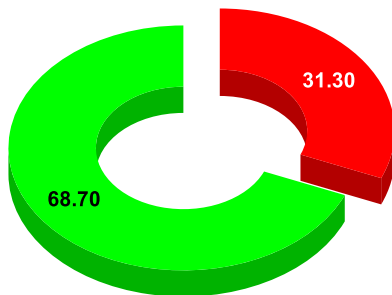
AS ON JULY 2023

22,498

COMPREHENSIVE INDEX

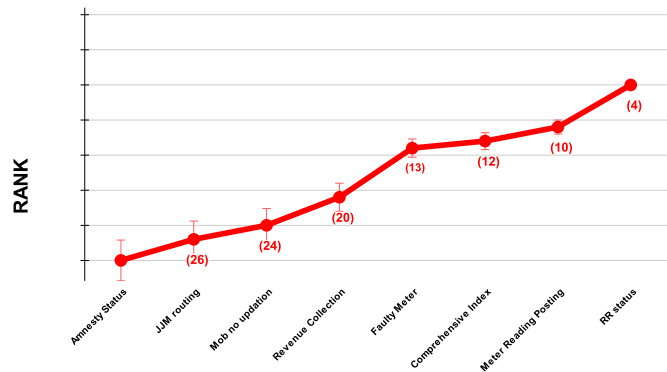
Marks	Total marks	Rank
68.70	100	12

MARKS OBTAINED



● Percent Score to be Achieved ● Percent Score Achieved

DIVISION RANK IN VARIOUS PARAMETERS



COMPREHENSIVE INDEX

REVENUE COLLECTION ACHIEVEMENT

METER READING POSTING

FAULTY METER REPLACEMENT

MOBILE NO UPDATION

REVENUE RECOVERY STATUS

JAL JEEVAN MISSION ROUTING

Marks	Total marks	Rank
68.70	100	12
17.25	25	20
21.00	16	10
13.40	20	13
2.00	10	24
5.06	8	4
9.99	10	26

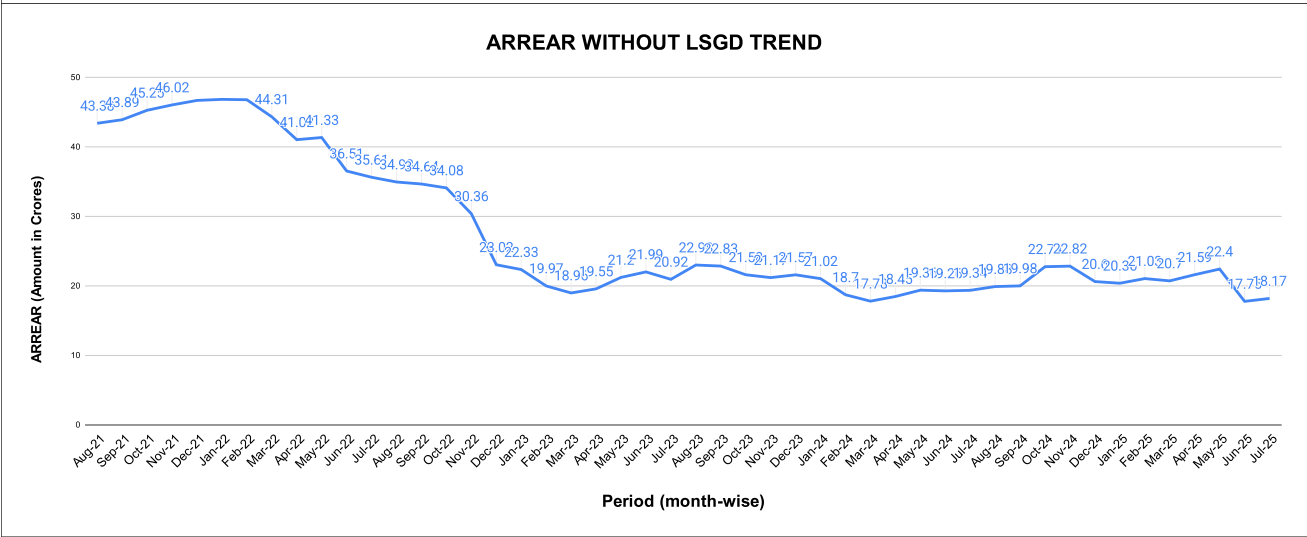
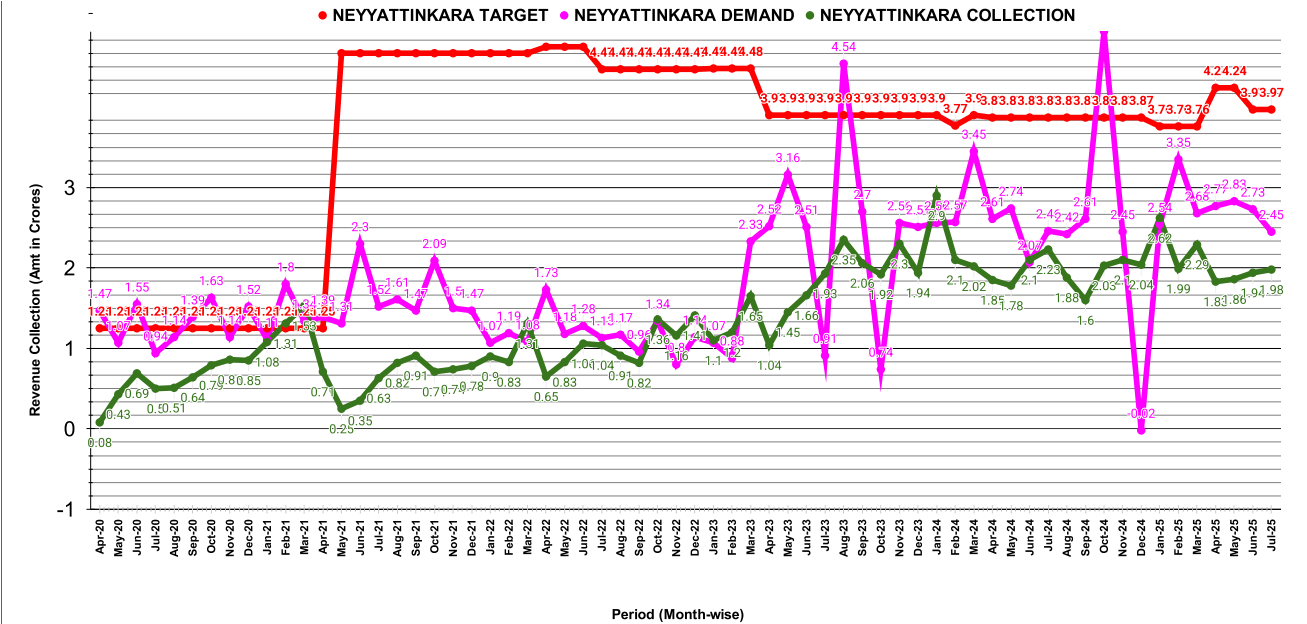
REVENUE COLLECTION ACHIEVEMENT

Marks	Total marks	Rank
17.25	25.00	20

SECTION RANKING

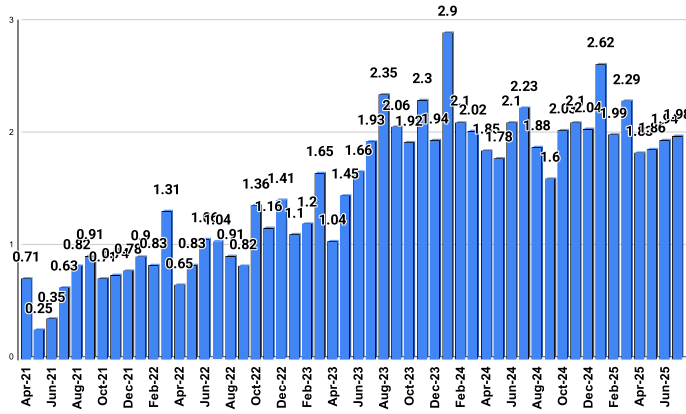
JUNE							JULY					
Rank	SECTION NAME	Opening Balance	Demand	Collection For the Month	% Collection		Rank	SECTION NAME	Opening Balance	Demand	Collection For the Month	% Collection
1	Neyyattinkara Section	36804593	5721316	6353553	14.94%		1	Neyyattinkara Section	35914442	7537664	5551402	12.78%
2	Parasala Section	25071516	2972973	4015828	14.32%		2	Kattakada Section	35240115	12537323	4803762	10.05%
3	Kattakada Section	35045343	6252243	5851437	14.17%		3	Parasala Section	23829069	3280943	2008524	7.41%
4	Aralumoodu Section	34184925	4009809	3398760	8.90%		4	Aralumoodu Section	34525977	3801861	2796648	7.30%
5	Kanjiramkulam Section	74924892	6430857	6587264	8.10%		5	Kanjiramkulam Section	74116492	6357343	4750964	5.90%

SUB-DIVISION RANKING											
JUNE						JULY					
Rank	Sub-Division	Opening Balance	Demand	Collection For the Month	% Collection	Rank	Sub-Division	Opening Balance	Demand	Collection For the Month	% Collection
1	Neyyattinkara Sub Dn.	96,921,452	14,946,532	16,220,970	14.50%	1	Neyyattinkara Sub Dn.	94,983,626	23,355,930	12,364,830	10.45%
2	Kanjiramkulam Subdivision	109,109,817	10,440,666	10,000,797	8.37%	2	Kanjiramkulam Subdivision	108,642,469	10,159,204	7,547,612	6.35%

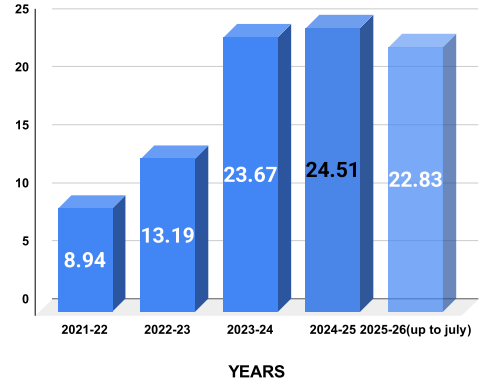


COLLECTION IN LAKHS												
YEAR	April	May	June	July	August	September	October	November	December	January	February	March
2020-21	8.00	42.67	68.91	50.20	51.19	64.29	79.46	86.36	85.23	108.49	130.97	152.53
2021-22	70.92	24.58	34.99	63.41	82.30	91.50	70.85	73.57	77.58	89.76	83.15	130.78
2022-23	65.32	83.14	105.89	104.05	91.03	82.46	136.42	116.07	140.67	109.59	119.63	164.95
2023-24	103.77	144.78	166.23	193.03	235.28	206.27	191.96	229.56	193.72	290.34	210.25	202.36
2024-25	185.44	177.58	209.72	223.22	188.20	159.83	202.91	209.67	204.36	262.22	199.12	229.16
2025-26	182.92	186.11	193.57	198.23								
						YEAR	2020-21	2021-22	2022-23	2023-24	2024-25	2025-26 (up to July)
						COLLECTION IN LAKHS	928.29	893.40	1,319.21	2,367.54	2,451.44	760.83

COLLECTION

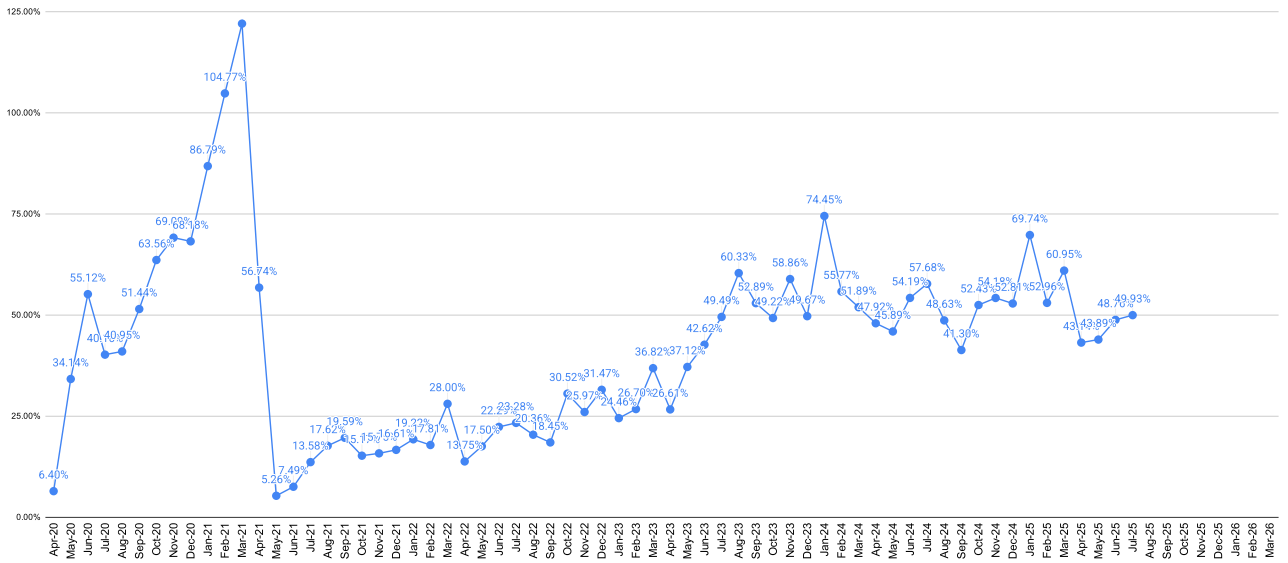


SCORES



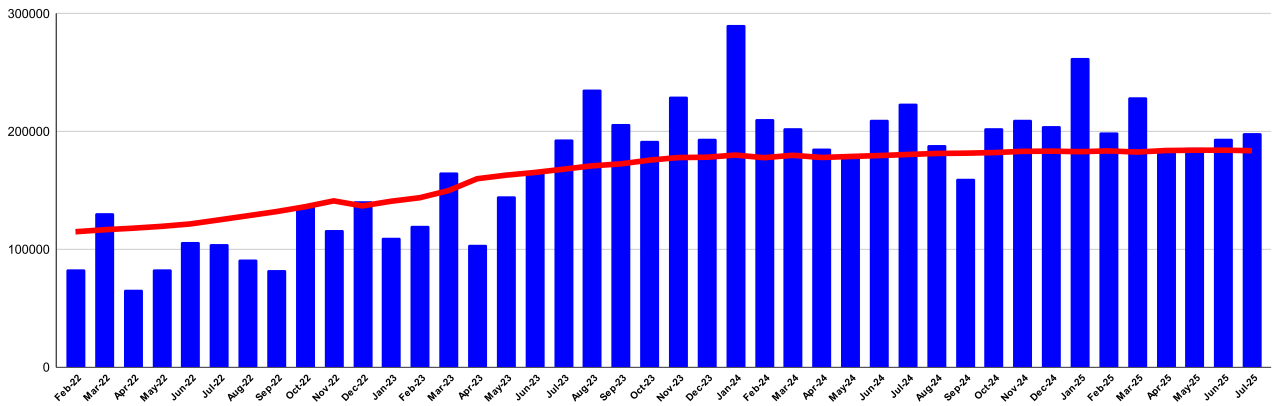
YEARS

REVENUE COLLECTION ACHIEVEMENT IN PERCENTAGE

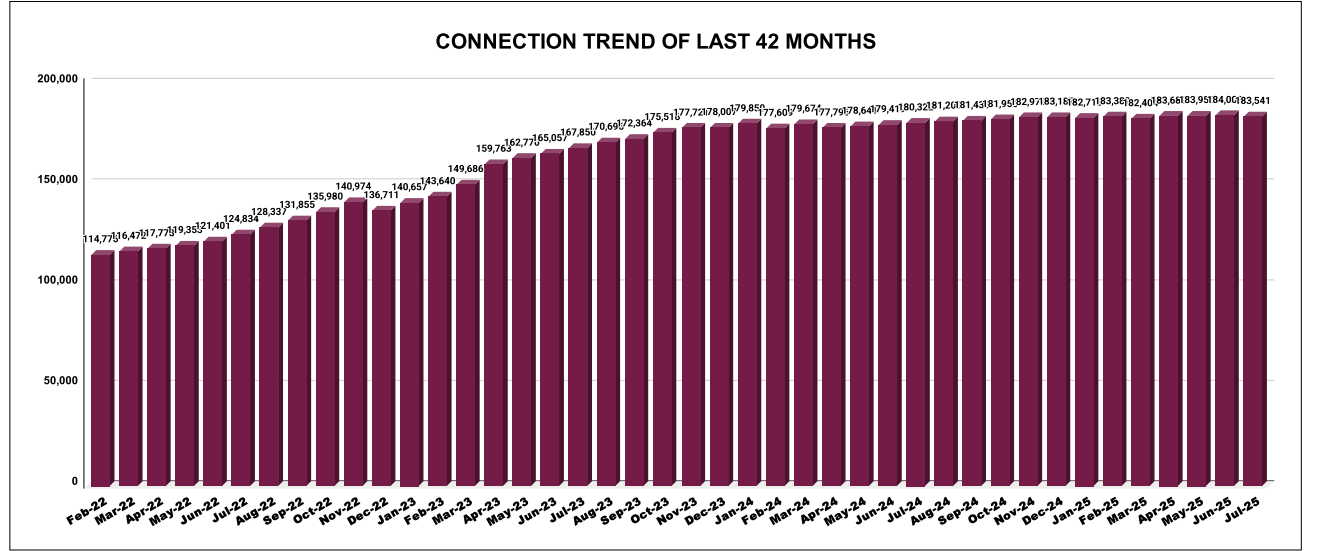


COLLECTIONS VS CONNECTIONS TREND FOR THE LAST 54 MONTHS

■ COLLECTION - CONNECTION



CONNECTION OF LAST 60 MONTHS												
YEAR	April	May	June	July	August	September	October	November	December	January	February	March
2020-21	76,648	77,016	77,457	77,750	77,935	78,200	78,474	89,803	89,945	92,084	93,737	95,669
2021-22	96,857	97,627	1,00,126	1,01,209	1,03,891	1,05,581	1,07,032	1,07,968	1,12,995	1,13,811	1,14,776	1,16,472
2022-23	1,17,778	1,19,353	1,21,401	1,24,834	1,28,337	1,31,855	1,35,980	1,40,974	1,36,711	1,40,657	1,43,640	1,49,686
2023-24	1,59,763	1,62,770	1,65,057	1,67,850	1,70,696	1,72,364	1,75,516	1,77,721	1,78,007	1,79,850	1,77,609	1,79,674
2024-25	1,77,796	1,78,641	1,79,419	1,80,322	1,81,209	1,81,433	1,81,956	1,82,972	1,83,187	1,82,713	1,83,382	1,82,404
2025-26	1,83,689	1,83,956	1,84,003	1,83,541								

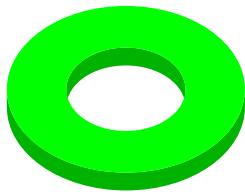


METER READING POSTING	Marks	Total marks	Rank
	21.00	16	10

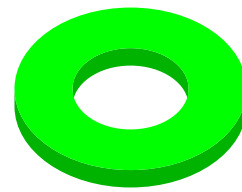
Total No. of Live connection on February	Total No. of readings posted on February	Total Readings of February against 50% Total Live Connections of February 25
169,108	86,430	102.22%
Total No. of Live connection on April	Total No. of readings posted on April	Total Readings of April against 50% Total Live Connections of April 25
170,204	85,868	100.90%
Total No. of Live connection on June	Total No. of readings posted on June	Total Readings of June against 50% Total Live Connections of June 25
170,260	86,607	101.73%

Total No. of Live connection on March	Total No. of readings posted on March	Total Readings of March against 50% Total Live Connections of March 25
169,593	89,326	105.34%
Total No. of Live connection on May	Total No. of readings posted on May	Total Readings of May against 50% Total Live Connections of May 25
170,495	88,611	103.95%
Total No. of Live connection on July	Total No. of readings posted on July	Total Readings of July against 50% Total Live Connections of July 25
170,457	89,550	105.07%

METER READING POSTING % AGAINST NUMBER OF LIVE CONNECTIONS OF FEBRUARY

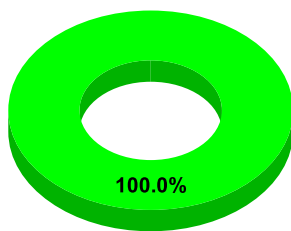


METER READING POSTING % AGAINST NUMBER OF LIVE CONNECTIONS OF MARCH

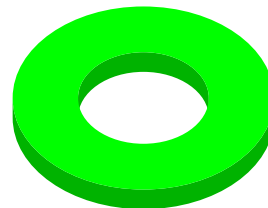


● METER READINGS POSTED

METER READING POSTING % AGAINST NUMBER OF LIVE CONNECTIONS OF APRIL

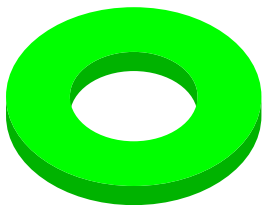


METER READING POSTING % AGAINST NUMBER OF LIVE CONNECTIONS OF MAY



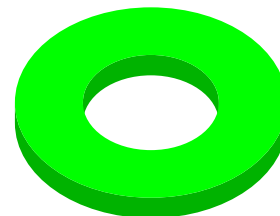
● METER READINGS POSTED

METER READING POSTING % AGAINST NUMBER OF LIVE CONNECTIONS OF JUNE

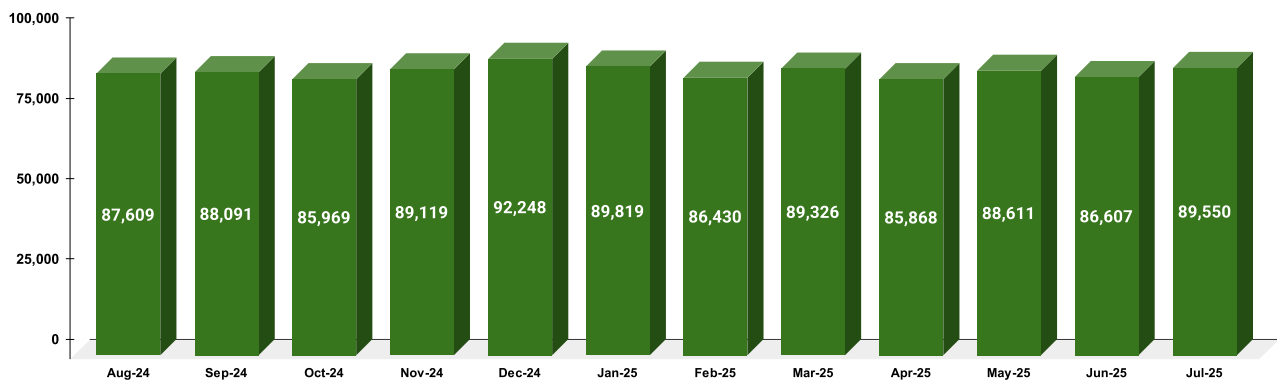


● METER READINGS POSTED

METER READING POSTING % AGAINST NUMBER OF LIVE CONNECTIONS OF JULY



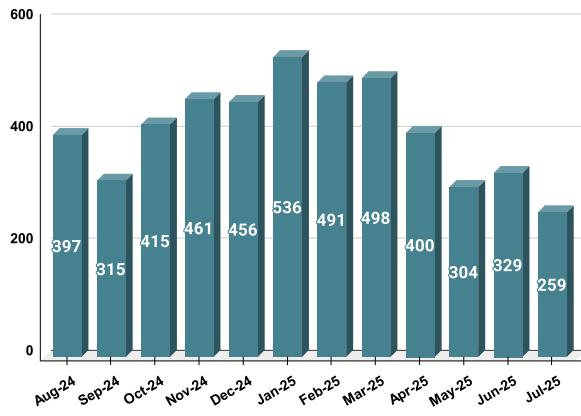
METER READING POSTED FOR LAST 12 MONTHS



FAULTY METER

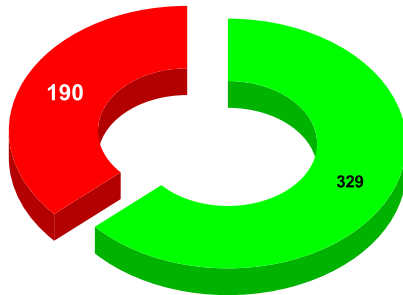
Marks	Total marks	Rank
13.40	20	13

FAULTY METER REPLACEMENT OF LAST 12 MONTHS



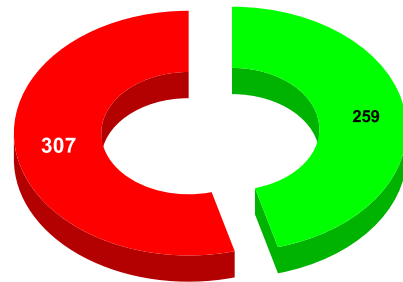
MONTH	Total No.of Faulty meters	Number of Faulty meter replaced	Number of Faulty meter pending
FEBRUARY	706	491	215
MARCH	522	498	24
APRIL	548	400	148
MAY	560	304	256
JUNE	519	329	190
JULY	566	259	307

FAULTY METER REPLACED VS FAULTY METER TO BE REPLACED ON JUNE



- NO OF FAULTY METERS REPLACED
- FAULTY METERS TO BE REPLACED

FAULTY METER REPLACED VS FAULTY METER TO BE REPLACED ON JULY



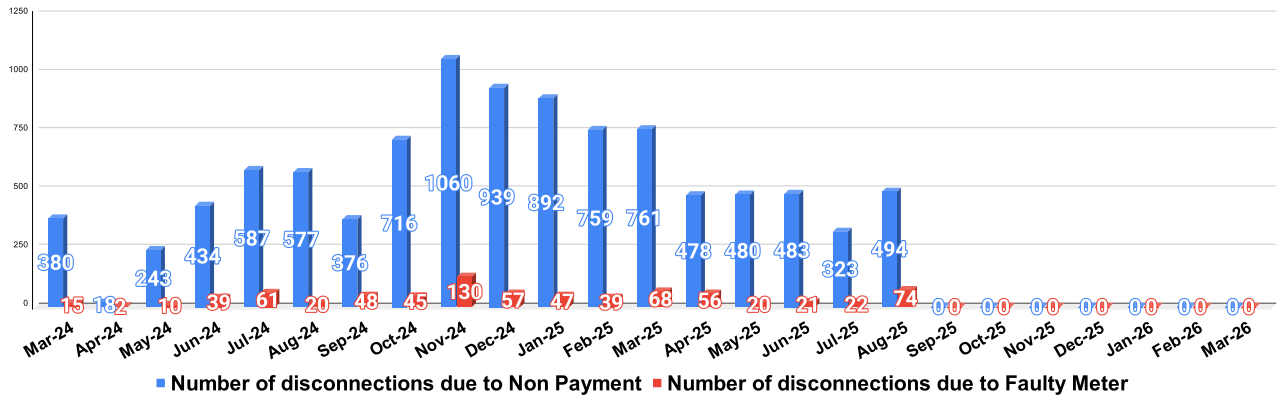
- NO OF FAULTY METERS REPLACED
- FAULTY METERS TO BE REPLACED

DISCONNECTION STATUS

Marks	Total marks	Rank
-	-	-

DISCONNECTI ONS	APRIL	MAY	JUNE	JULY	AUGUST	SEPTEMBER	OCTOBER	NOVEMBER	DECEMBER	JANUARY	FEBRUARY	MARCH
DUE TO NON PAYMENT ()	18	243	434	587	577	376	716	1,060	939	892	759	761
DUE TO FAULTY METER)	2	10	39	61	20	48	45	130	57	47	39	68
DUE TO NON PAYMENT()	478	480	483	323	494	0	0	0	0	0	0	
DUE TO FAULTY METER()	56	20	21	22	74	0	0	0	0	0	0	

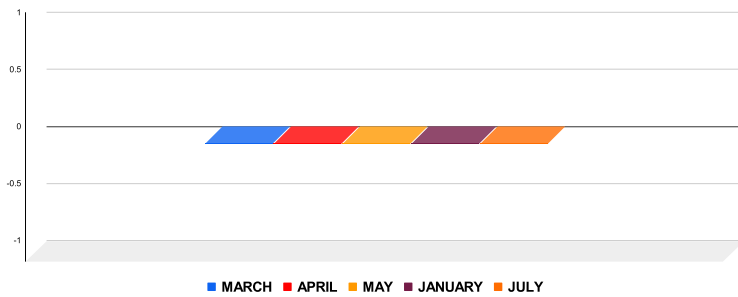
NUMBER OF DISCONNECTIONS DUE TO NON PAYMENT VS DUE TO FAULTY METERS



MOBILE NUMBER UPDATION

Marks	Total marks	Rank
2.00	10	24

MOBILE NUMBER UPDATION PENDING



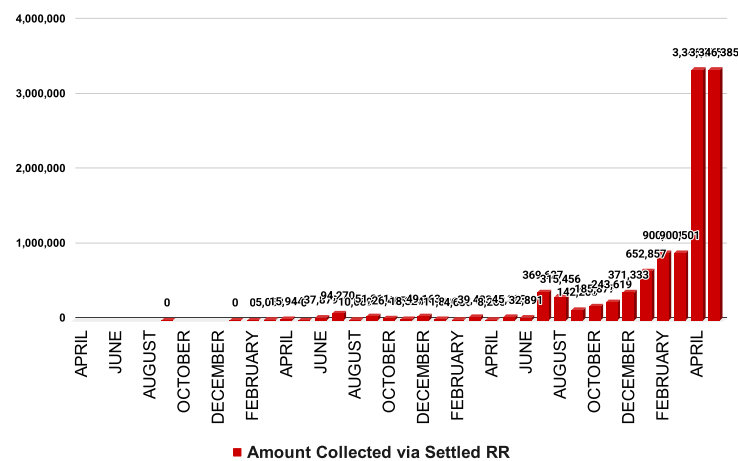
Mobile Number updation pending

MARCH	APRIL	MAY	JUNE	JULY
0	0	0	0	0

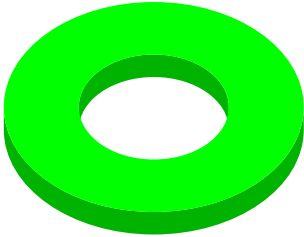
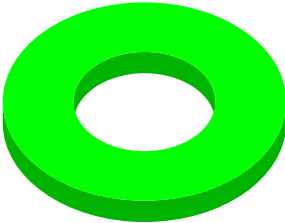
REVENUE RECOVERY STATUS

Marks	Total marks	Rank
5.06	8	4

AMOUNT COLLECTED VIA SETTLED RR OF PREVIOUS MONTHS



MONTH	No of RR Notices Issued	No of RR Proceed	No Of RR Settled	Amount Collected via Settled RR
DECEMBER	931	405	132	371,333
JANUARY	543	393	193	652,857
FEBRUARY	776	271	185	900,501
MARCH	694	337	292	3,346,385
APRIL	612	230	93	498,828
MAY	513	255	97	394,693

JAL JEEVAN MISSION ROUTING		Marks	Total marks	Rank
		9.99	10	26
CONNECTIONS ROUTED THROUGH E ABACUS & PENDING TO BE ROUTED AS ON JAN 2025 		SEPTEMBER Total No of JJM Connection 95,900 No of connection routed in e-Abacus 95,880 Balance connection to be routed 0		
		OCTOBER Total No of JJM Connection 97,332 No of connection routed in e-Abacus 97,332 Balance connection to be routed 0		
		NOVEMBER Total No of JJM Connection 98,954 No of connection routed in e-Abacus 98,954 Balance connection to be routed 0		
CONNECTIONS ROUTED THROUGH E ABACUS & PENDING TO BE ROUTED AS ON FEB 2025 		DECEMBER Total No of JJM Connection 98,997 No of connection routed in e-Abacus 98,997 Balance connection to be routed 0		
		JANUARY Total No of JJM Connection 99,127 No of connection routed in e-Abacus 99,127 Balance connection to be routed 0		
		FEBRUARY Total No of JJM Connection 100,459 No of connection routed in e-Abacus 100,459 Balance connection to be routed 0		

The Revenue Division of Neyyattinkara has a total number of 183382 connections of which 170457 are live connections.

The monthly demand is Rs. 26092836 and the monthly collection is Rs. 159.83 lakhs. The PIC monthly consumption is 1121613 KL. The arrears of Neyyattinkara for the month of July 2024 is Rs.21.03 Crore.

The total number of Readings posted as on July 2024 is 89550. The Total number of Faulty meter is 566 , out of which 259 are the Faulty meters replaced and 307 are to be replaced.

The disconnection status of Neyyattinkara shows that 0 are disconnections due to non payment and 0 due to faulty meter.

The Mobile number pending to be updated is 0.

When it comes to the status of Revenue Recovery of the defaulting connections, the number of RR cases settled is 97 and the Amount collected via settled RR is 394593.

Total number of JJM Connections is 100459 with 0 connections pending to be routed in E Abacus.

Sources of data	
Revenue Collection Data	DCB based on E-abacus data collected from Divisions and consolidated by RMC
Amnesty Data	Summary of Live data submitted by Revenue Division via Google sheet shared
Meter Reading Data	Data collected from division via google sheets
Faulty Meter Replacement Data	Data collected from division via google sheets
JJM Reading Posting	Data collected from division via google sheets
Moile Number updation Status	Data collected from division via google sheets
Disconnection data	Data collected from division via google sheets
BPL data	Data provided from DBA
Arrear Break up	Govt. Arrear , Central Govt. Arrear as on July based on e-abacus ; LSGD data based on DCB
Total Arrears and Total Connections	Data from DCB
Top Defaulters	Arrear data from E-abacus as on July