



കേരള ജല അതോറിറ്റി

ALUVA

JULY

Report Generated at 04/10/2025 11:32:51

Rank-5

Name of Executive Engineer

Sri. Vinny Paul

Name of Revenue officer

Reshmi Varkey

CONNECTIONS AS ON AS ON JULY :

1,57,237

ARREARS IN CRORE AS ON JULY :

14.53

ARREARS

STATE GOVERNMENT

CENTRAL GOVERNMENT

PSU

OTHERS

LSGD

99,22,492

3,69,889

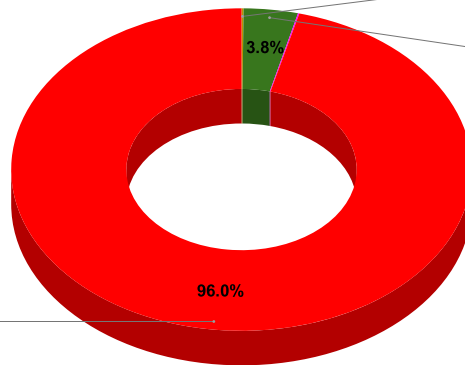
2,41,434

25,01,58,188

15,60,83,680

ARREAR BREAK UP INCLUDING LSGD

OTHERS
96.0%



Central Gov
0.1%
State Gov
3.8%

ARREARS INCLUDING LSGD

Corporation WC -Street Taps

0.0%

Municipality

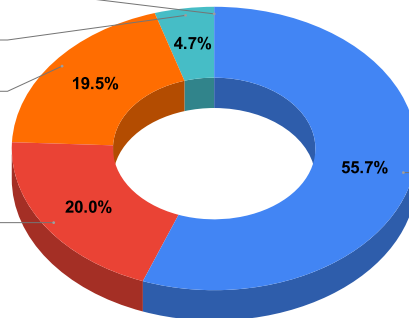
4.7%

Panchayath WC-Street Taps

19.5%

Non Domestic (N)

20.0%

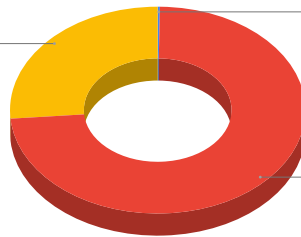


Domestic (D)
55.7%

DOMESTIC	NON DOMESTIC	INDUSTRIAL	SPECIAL	Bulk Supply	Panchayath WC-Street Taps	Municipality WC -Street Taps	Corporation WC - Street Taps
35,80,32,290	12,83,41,910	11,61,041	-635	0	12,55,69,461	3,04,94,200	20,019

ARREARS WITH OUT LSGD

Non Domestic (N)
26.3%

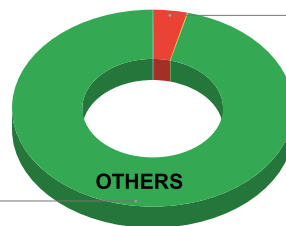


Industrial (I)
0.2%

Domestic (D)
73.4%

ARREAR BREAK UP WITH OUT LSGD

Domestic, Nondomestic and others
96.0%



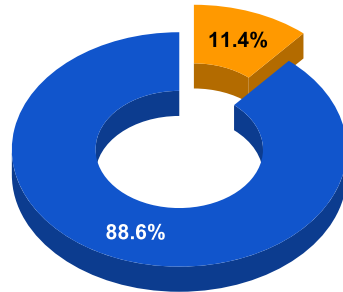
State Gov
3.8%

TOP DEFAULTERS OF ALUVA FOR THE MONTH OF JULY

SL NO	NAME	ARREAR
1	KORU KRISHNAN, PARIYARATHUKUDY /XVII, EDAYAPURAM, SY NO: 365/6.3, ALUVA	1,17,53,325
2	KARAN NARAYANAN, 8/65 7902383541, KALLAMPARAMBIL .HOUSE, ASAMANNOR	1,02,80,162
3	THAHASILDAR, MINI CIVILSTATION, POOPAANI ROAD, PERUMBAVOOR 9497458795	31,97,832
4	MUNCIPAL SECRETARY(D/C20/10/08, COMFORT STATION, ALUVA, XXX	25,35,768
5	THE HEAD MISTRESS, 3 307 A, MODEL RESIDENTIAL SCHOOL, KEEZHMADU	12,76,359
6	GOVT.HOSPITAL, ..., ALUVA, XXX	10,04,591
7	THAHASILDAR, VII/501, TALUK OFFICE, R 79, ALUVA OLD ROUTE NO. 9999, XXX	8,26,445
8	CI OF POLICE, XIII/256 (12), SUBJAILROAD, ALUVA P.O.	7,37,319
9	SEBIYA KATHERU PILLAI, ILANJIKKAL, THIKKATTUKARA, 249 A-VII, CHOORNIKKARA	5,65,632
10	RESMI VIKAS, CHITHIRA CASE CONSUMER, DESAM, KUNNUPURAM	4,19,761

BPL DATA

BPL CONNECTIONS AS % OF TOTAL LIVE CONNECTIONS



● BPL CONNECTIONS ● TOTAL LIVE CONNECTIONS

TOTAL NO OF BPL CONNECTIONS

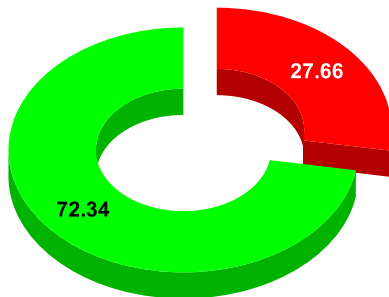
AS ON JULY 2023

18,225

COMPREHENSIVE INDEX

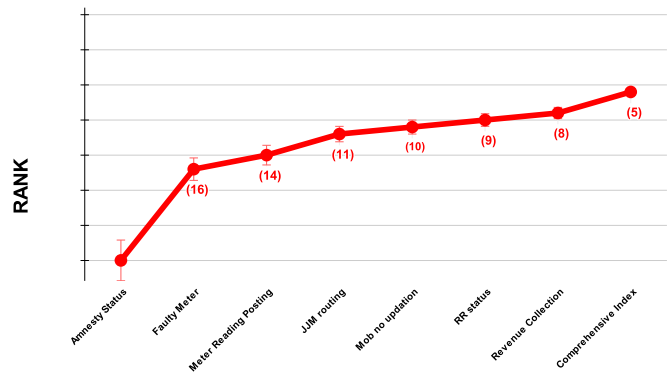
Marks	Total marks	Rank
72.34	100	5

MARKS OBTAINED



● Percent Score to be Achieved ● Percent Score Achieved

DIVISION RANK IN VARIOUS PARAMETERS



COMPREHENSIVE INDEX

REVENUE COLLECTION ACHIEVEMENT

METER READING POSTING

FAULTY METER REPLACEMENT

MOBILE NO UPDATION

REVENUE RECOVERY STATUS

JAL JEEVAN MISSION ROUTING

Marks	Total marks	Rank
72.34	100	5
22.44	25	8
20.95	16	14
13.26	20	16
2.00	10	10
3.69	8	9
10.00	10	11

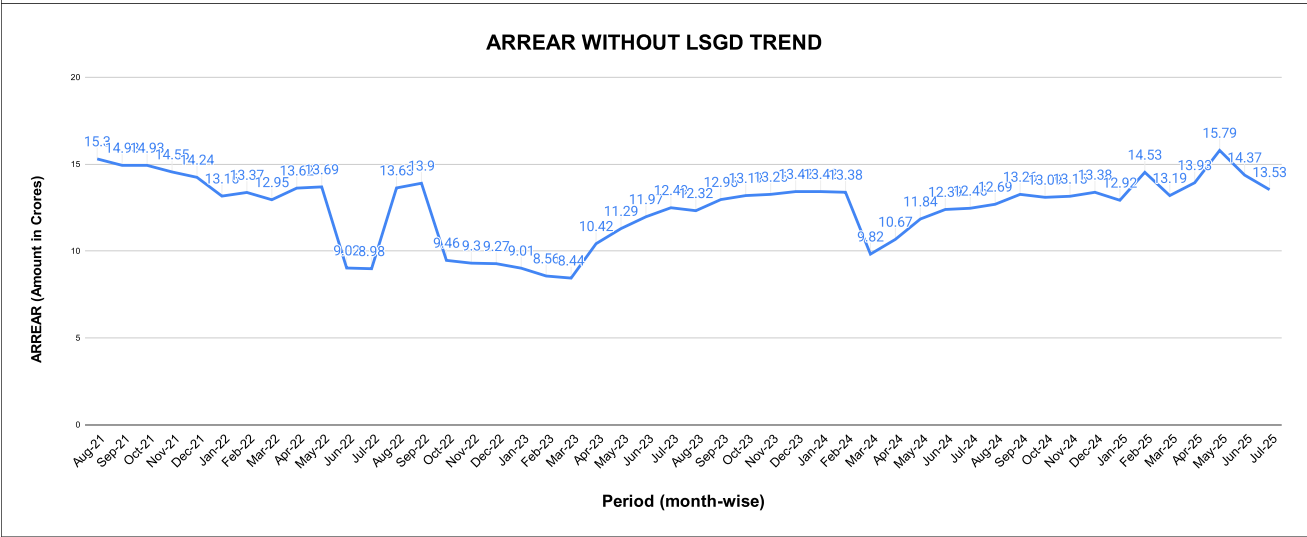
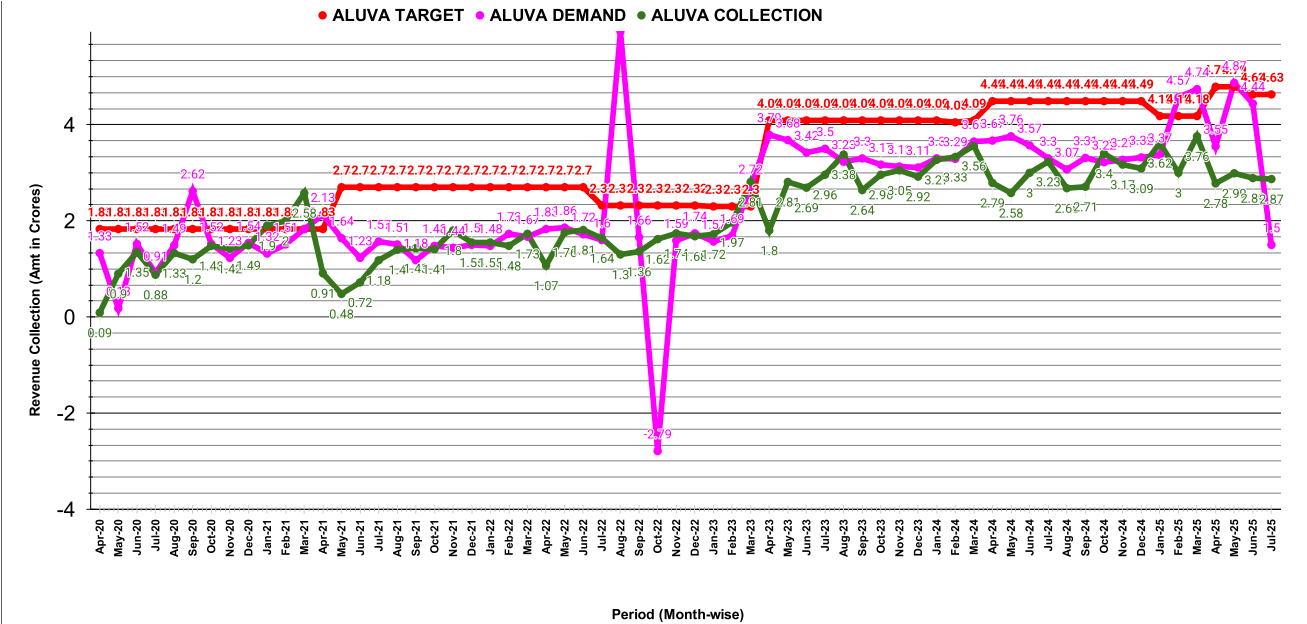
REVENUE COLLECTION ACHIEVEMENT

Marks	Total marks	Rank
22.44	25.00	8

SECTION RANKING

JUNE							JULY					
Rank	SECTION NAME	Opening Balance	Demand	Collection For the Month	% Collection		Rank	SECTION NAME	Opening Balance	Demand	Collection For the Month	% Collection
1	Nedumbassery Section	7515965	3534641	3581397	32.41%		1	Nedumbassery Section	7468217	3277691	3046868	28.35%
2	Aluva Section	30202285	10493674	10882694	26.74%		2	Vadakkekkara Section	19367701	5686040	4684273	18.70%
3	Vadakkekkara Section	19897395	5601703	6126914	24.03%		3	Aluva Section	28761162	23950734	9133200	17.33%
4	Angamali Section	22271386	4315917	4973419	18.71%		4	Chowara Section	3747636	788856	739863	16.31%
5	Chowara Section	3657508	849859	758157	16.82%		5	Angamali Section	20164251	4237405	3636381	14.90%
6	Perumbavoor Secion	50258322	8948209	9142894	15.44%		6	Perumbavoor Secion	49681463	7772274	7772868	13.53%

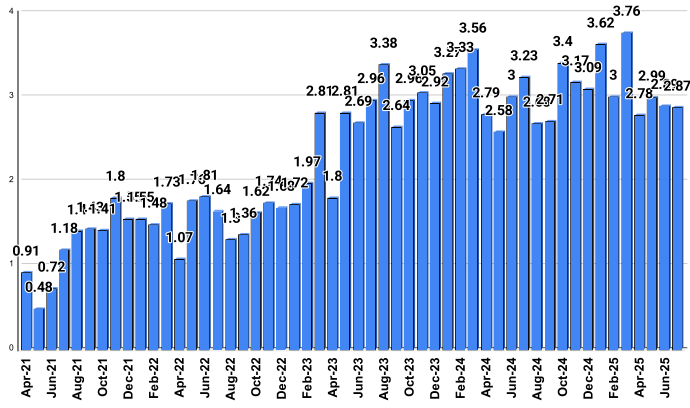
SUB-DIVISION RANKING											
JUNE						JULY					
Rank	Sub-Division	Opening Balance	Demand	Collection For the Month	% Collection	Rank	Sub-Division	Opening Balance	Demand	Collection For the Month	% Collection
1	PH Aluva Sub Dn.	30,202,285	10,493,674	11,656,692	28.64%	1	Vadakkekkara Sub Dn	26,835,918	8,963,731	7,731,141	21.60%
2	Vadakkekkara Sub Dn	27,413,360	9,136,344	9,708,311	26.56%	2	PH Aluva Sub Dn.	28,761,162	23,950,734	10,089,492	19.14%
3	Angamali Sub Dn.	25,928,894	5,165,776	5,731,576	18.43%	3	Angamali Sub Dn.	23,911,887	5,026,261	4,376,244	15.12%
4	Perumbavoor Sub Dn.	50,258,322	8,948,209	9,142,894	15.44%	4	Perumbavoor Sub Dn.	49,681,463	7,772,274	7,803,328	13.58%



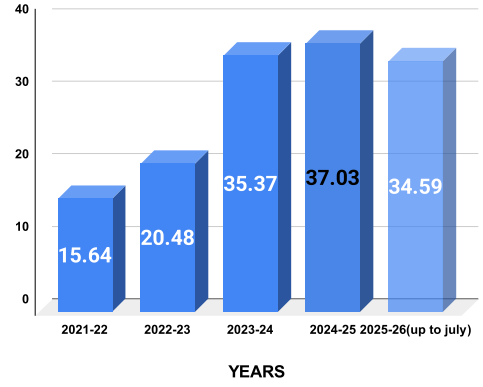
COLLECTION IN LAKHS												
YEAR	April	May	June	July	August	September	October	November	December	January	February	March
2020-21	9.19	89.85	135.47	87.85	132.97	119.90	147.78	141.78	149.30	190.16	199.90	257.76
2021-22	91.36	47.99	71.78	118.40	140.27	143.36	140.80	179.63	155.06	154.58	147.99	172.68
2022-23	107.30	175.90	181.39	163.56	129.86	136.17	161.82	174.10	168.00	172.01	197.26	280.79
2023-24	179.70	281.21	269.26	295.64	338.31	264.34	296.01	304.66	291.62	326.58	333.17	356.43
2024-25	278.99	257.62	299.88	323.42	268.15	270.86	339.64	317.09	308.80	362.39	300.00	376.02
2025-26	278.48	299.35	289.39	286.55								
YEAR	2020-21	2021-22	2022-23	2023-24	2024-25	2025-26 (up to July)						
COLLECTION IN LAKHS	1,661.91	1,563.89	2,048.15	3,536.93	3,702.86	1,153.77						

REVENUE COLLECTION TREND	REVENUE COLLECTION FOR LAST 4 YEARS IN CRORES
--------------------------	---

COLLECTION

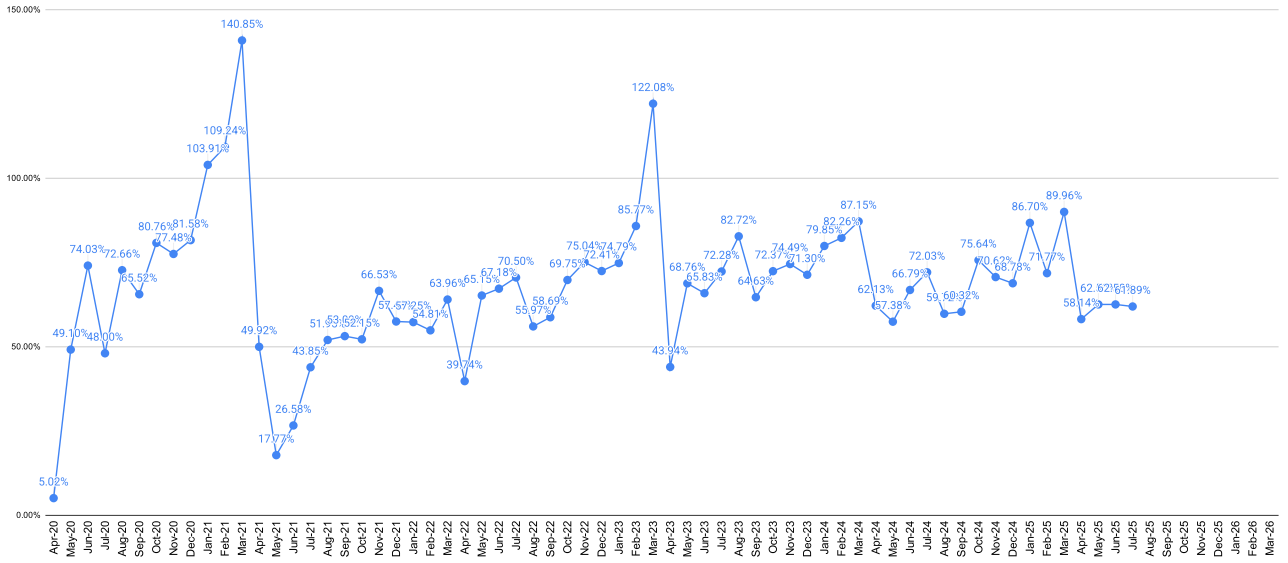


SCORES



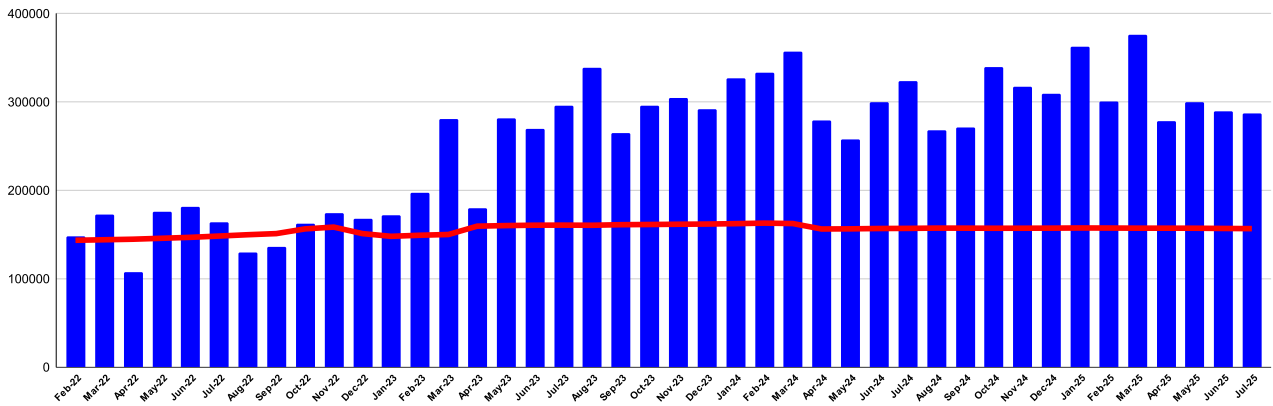
YEARS

REVENUE COLLECTION ACHIEVEMENT IN PERCENTAGE

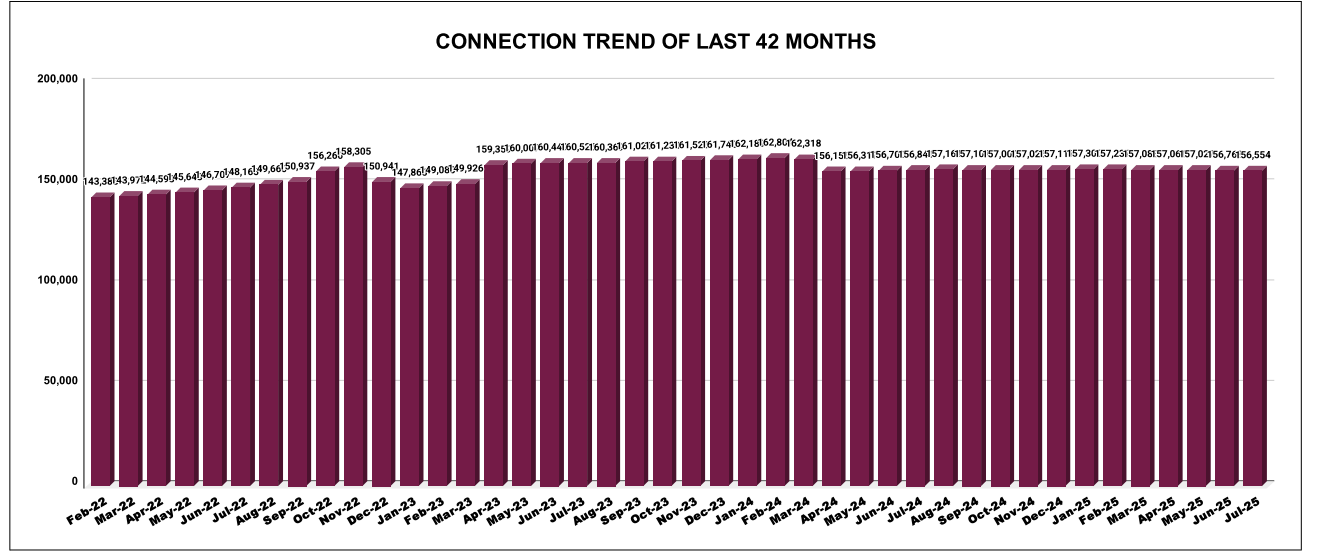


COLLECTIONS VS CONNECTIONS TREND FOR THE LAST 54 MONTHS

■ COLLECTION - CONNECTION



CONNECTION OF LAST 60 MONTHS												
YEAR	April	May	June	July	August	September	October	November	December	January	February	March
2020-21	96,357	96,736	97,090	97,319	97,500	97,670	97,873	1,07,114	1,08,690	1,12,092	1,16,125	1,20,968
2021-22	1,23,628	1,25,104	1,27,854	1,30,144	1,33,216	1,35,987	1,38,178	1,40,132	1,41,489	1,42,347	1,43,388	1,43,972
2022-23	1,44,593	1,45,643	1,46,707	1,48,165	1,49,660	1,50,937	1,56,260	1,58,305	1,50,941	1,47,865	1,49,080	1,49,926
2023-24	1,59,359	1,60,007	1,60,449	1,60,526	1,60,369	1,61,020	1,61,238	1,61,526	1,61,740	1,62,189	1,62,804	1,62,318
2024-25	1,56,156	1,56,317	1,56,700	1,56,841	1,57,161	1,57,107	1,57,000	1,57,025	1,57,117	1,57,300	1,57,237	1,57,088
2025-26	1,57,061	1,57,027	1,56,768	1,56,554								

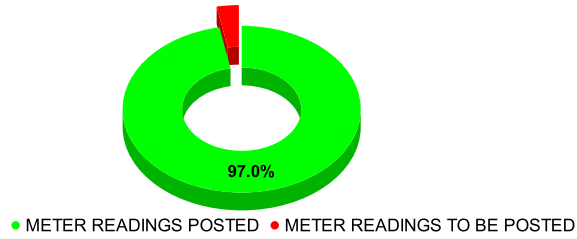


METER READING POSTING	Marks	Total marks	Rank
	20.95	16	14

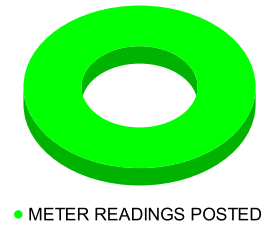
Total No. of Live connection on February	Total No. of readings posted on February	Total Readings of February against 50% Total Live Connections of February 25
151,960	73,708	97.01%
Total No. of Live connection on April	Total No. of readings posted on April	Total Readings of April against 50% Total Live Connections of April 25
149,062	73,556	98.69%
Total No. of Live connection on June	Total No. of readings posted on June	Total Readings of June against 50% Total Live Connections of June 25
148,384	76,290	102.83%

Total No. of Live connection on March	Total No. of readings posted on March	Total Readings of March against 50% Total Live Connections of March 25
149,281	78,466	105.13%
Total No. of Live connection on May	Total No. of readings posted on May	Total Readings of May against 50% Total Live Connections of May 25
148,936	77,603	104.21%
Total No. of Live connection on July	Total No. of readings posted on July	Total Readings of July against 50% Total Live Connections of July 25
147,653	75,636	102.45%

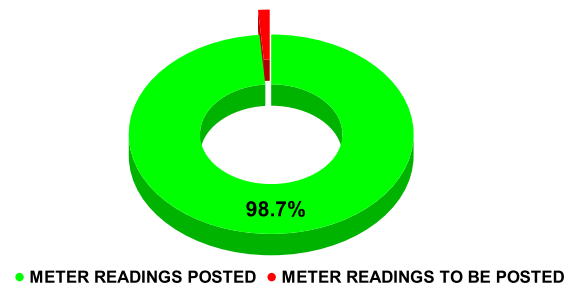
METER READING POSTING % AGAINST NUMBER OF LIVE CONNECTIONS OF FEBRUARY



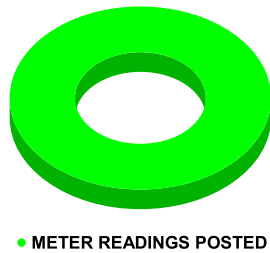
METER READING POSTING % AGAINST NUMBER OF LIVE CONNECTIONS OF MARCH



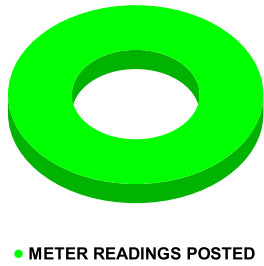
METER READING POSTING % AGAINST NUMBER OF LIVE CONNECTIONS OF APRIL



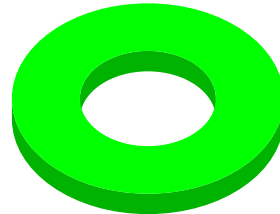
METER READING POSTING % AGAINST NUMBER OF LIVE CONNECTIONS OF MAY



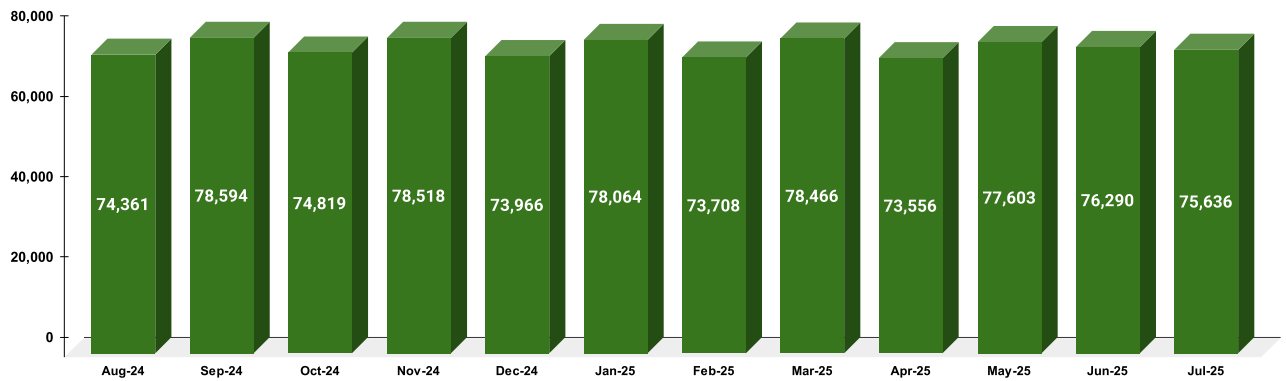
METER READING POSTING % AGAINST NUMBER OF LIVE CONNECTIONS OF JUNE



METER READING POSTING % AGAINST NUMBER OF LIVE CONNECTIONS OF JULY



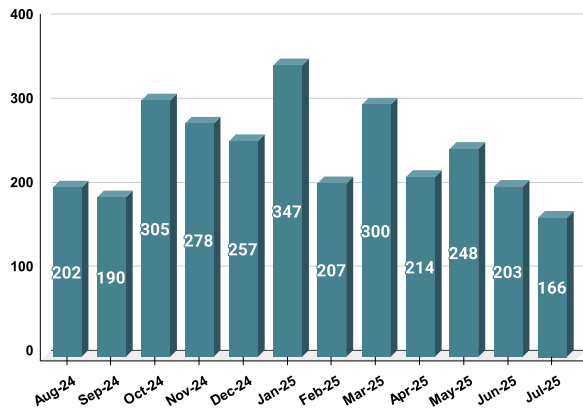
METER READING POSTED FOR LAST 12 MONTHS



FAULTY METER

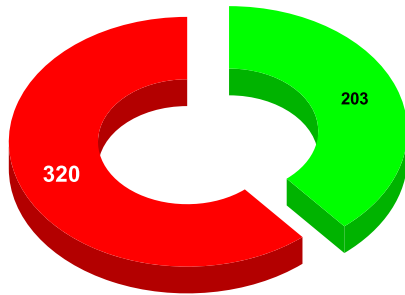
Marks	Total marks	Rank
13.26	20	16

FAULTY METER REPLACEMENT OF LAST 12 MONTHS



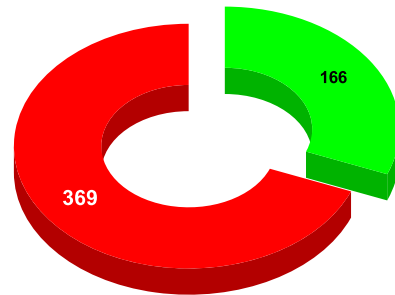
MONTH	Total No.of Faulty meters	Number of Faulty meter replaced	Number of Faulty meter pending
FEBRUARY	571	207	364
MARCH	527	300	227
APRIL	529	214	315
MAY	523	248	275
JUNE	523	203	320
JULY	535	166	369

FAULTY METER REPLACED VS FAULTY METER TO BE REPLACED ON JUNE



- NO OF FAULTY METERS REPLACED
- FAULTY METERS TO BE REPLACED

FAULTY METER REPLACED VS FAULTY METER TO BE REPLACED ON JULY



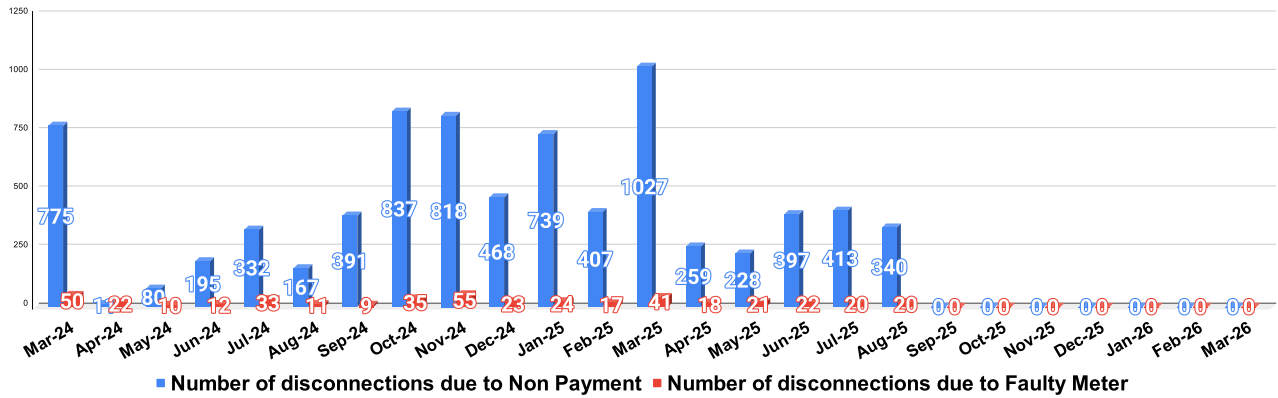
- NO OF FAULTY METERS REPLACED
- FAULTY METERS TO BE REPLACED

DISCONNECTION STATUS

Marks	Total marks	Rank
-	-	-

DISCONNECTI ONS	APRIL	MAY	JUNE	JULY	AUGUST	SEPTEMBER	OCTOBER	NOVEMBER	DECEMBER	JANUARY	FEBRUARY	MARCH
DUE TO NON PAYMENT ()	11	80	195	332	167	391	837	818	468	739	407	1,027
DUE TO FAULTY METER)	22	10	12	33	11	9	35	55	23	24	17	41
DUE TO NON PAYMENT()	259	228	397	413	340	0	0	0	0	0	0	
DUE TO FAULTY METER()	18	21	22	20	20	0	0	0	0	0	0	

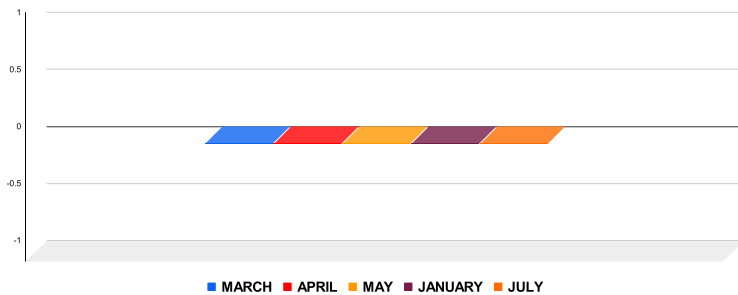
NUMBER OF DISCONNECTIONS DUE TO NON PAYMENT VS DUE TO FAULTY METERS



MOBILE NUMBER UPDATION

Marks	Total marks	Rank
2.00	10	10

MOBILE NUMBER UPDATION PENDING



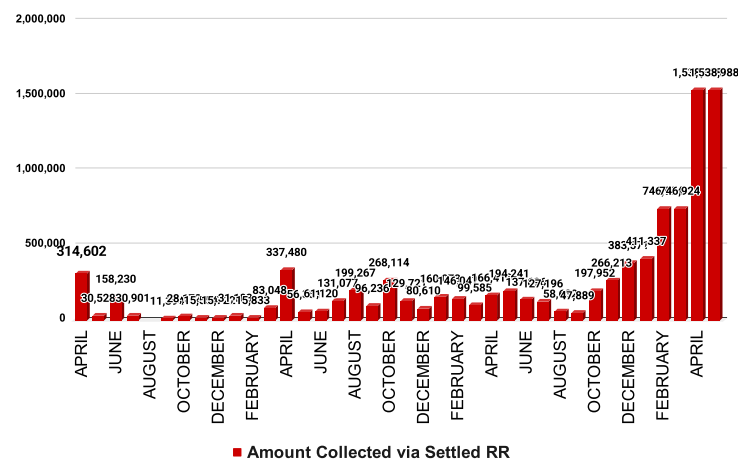
Mobile Number updation pending

MARCH	APRIL	MAY	JUNE	JULY
0	0	0	0	0

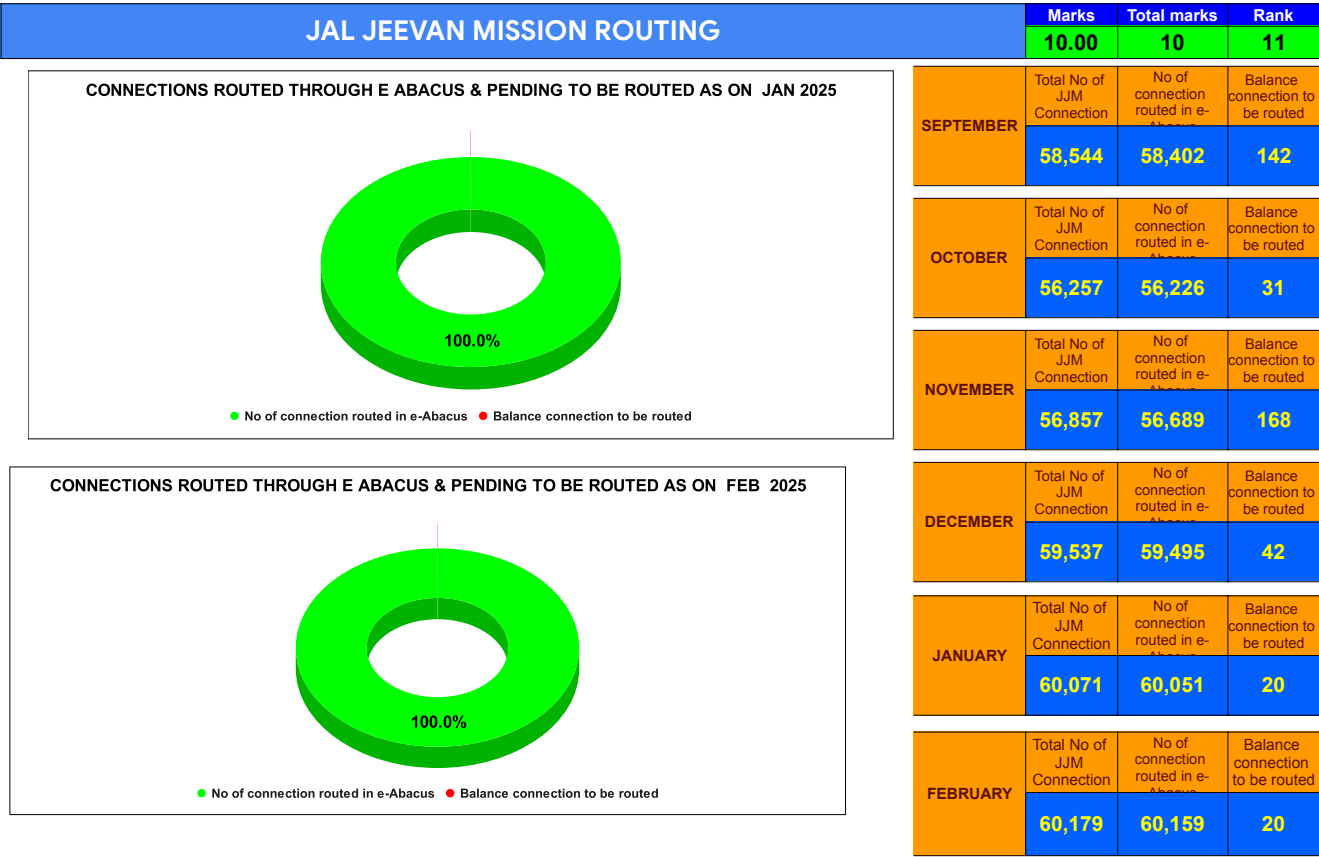
REVENUE RECOVERY STATUS

Marks	Total marks	Rank
3.69	8	9

AMOUNT COLLECTED VIA SETTLED RR OF PREVIOUS MONTHS



MONTH	No of RR Notices Issued	No of RR Proceed	No Of RR Settled	Amount Collected via Settled RR
DECEMBER	182	150	74	383,571
JANUARY	360	48	77	411,337
FEBRUARY	251	63	152	746,924
MARCH	529	35	249	1,538,988
APRIL	299	49	81	181,641
MAY	121	205	50	200,725



The Revenue Division of Aluva has a total number of 157237 connections of which 147653 are live connections.

The monthly demand is Rs. 33131800 and the monthly collection is Rs. 270.86 lakhs. The PIC monthly consumption is 1233324 KL. The arrears of Aluva for the month of July 2024 is Rs.14.53 Crore.

The total number of Readings posted as on July 2024 is 75636. The Total number of Faulty meter is 535 , out of which 166 are the Faulty meters replaced and 369 are to be replaced.

The disconnection status of Aluva shows that 0 are disconnections due to non payment and 0 due to faulty meter.

The Mobile number pending to be updated is 0.

When it comes to the status of Revenue Recovery of the defaulting connections, the number of RR cases settled is 50 and the Amount collected via settled RR is 200725.

Total number of JJM Connections is 60179 with 20 connections pending to be routed in E Abacus.

Sources of data	
Revenue Collection Data	DCB based on E-abacus data collected from Divisions and consolidated by RMC
Amnesty Data	Summary of Live data submitted by Revenue Division via Google sheet shared
Meter Reading Data	Data collected from division via google sheets
Faulty Meter Replacement Data	Data collected from division via google sheets
JJM Reading Posting	Data collected from division via google sheets
Moile Number updation Status	Data collected from division via google sheets
Disconnection data	Data collected from division via google sheets
BPL data	Data provided from DBA
Arrear Break up	Govt. Arrear , Central Govt. Arrear as on July based on e-abacus ; LSGD data based on DCB
Total Arrears and Total Connections	Data from DCB
Top Defaulters	Arrear data from E-abacus as on July