



കേരള ജല അതോറിറ്റി

ALAPPUZHA

JULY

Report Generated at 04/10/2025 11:30:54

Rank -19

Name of Executive Engineer

Sri. Sunil

Name of Revenue officer

Rajashekhan Pilla

CONNECTIONS AS ON AS ON JULY :

2,71,772

ARREARS IN CRORE AS ON JULY :

26.18

ARREARS

STATE GOVERNMENT

CENTRAL GOVERNMENT

PSU

OTHERS

LSGD

59,51,478

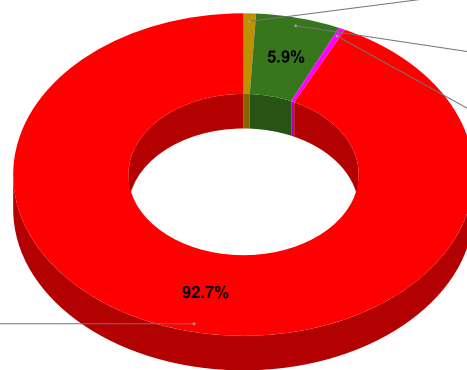
8,69,683

4,63,320

9,30,72,487

57,55,25,297

ARREAR BREAK UP INCLUDING LSGD



Central Gov

0.9%

State Gov

5.9%

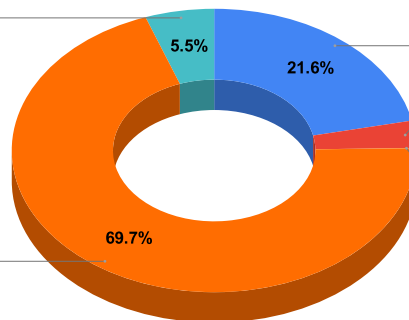
PSU

0.5%

OTHERS

92.7%

ARREARS INCLUDING LSGD



Municipality

5.5%

Domestic (D)

21.6%

Non Domestic (N)

3.1%

Special (S)

0.0%

Panchayath WC-Street Taps

69.7%

DOMESTIC	NON DOMESTIC	INDUSTRIAL	SPECIAL	Bulk Supply	Panchayath WC-Street Taps	Municipality WC -Street Taps	Corporation WC - Street Taps
16,52,70,672	2,37,92,753	49,35,210	1,47,802	0	53,33,83,795	4,21,41,502	0

ARREARS WITH OUT LSGD

Special (S)

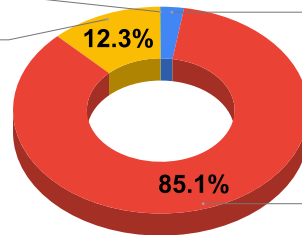
0.1%

Non Domestic (N)

12.3%

Industrial (I)

2.5%



Domestic (D)

85.1%

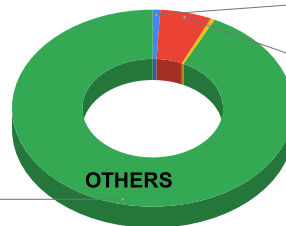
ARREAR BREAK UP WITH OUT LSGD

Central Gov

0.9%

State Gov

5.9%



Domestic, Nondomestic and others

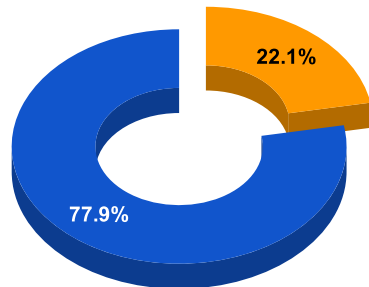
92.7%

TOP DEFAULTERS OF ALAPPUZHA FOR THE MONTH OF JULY

SL NO	NAME	ARREAR
1	Thahakunj, 1/326, Kodantharayil, Kannanakuzhi,	53,71,038
2	THIRUVENKITTA REDDIAR, TOWN HALL MUNCIPPAL -, COMMISSIONAR,	19,52,416
3	THE MUNICIPAL SECRETARY, C/O RIJU KHADER (RR), KRIPA HOSPITAL, KAYAMKULAM P.O	17,75,088
4	THE MANAGER, BEACH L.P. SCHOOL, PUNNAPRA, ALAPPUZHA	17,63,917
5	ASST.ENGINEER, P&T QUOTERS, VELLAKINAR, ALPY	6,29,171
6	P.VASUDEVAN, M D 9287055531, VASU COCO RESORTS PVT.LTD, VAYALAR P O	6,22,450
7	THE SECRETARY, CAPEX(RR), ERUVA, INDUSTRIAL CO-OP-SOCIETY	5,30,941
8	SUB INSPECTOR OF POLICE, POLICE QUARTERS, PUNNAPRA, 150/II	4,73,921
9	HEAD MASTER, BASIC TRAINING SCHOOL, MAVELIKKARA, .	4,39,077
10	THE SUB INSPECTOR OF POLICE, POLICE STATION, THRIKKUNNAPUZHA, .	4,05,048

BPL DATA

BPL CONNECTIONS AS % OF TOTAL LIVE CONNECTIONS



● BPL CONNECTIONS ● TOTAL LIVE CONNECTIONS

TOTAL NO OF BPL CONNECTIONS

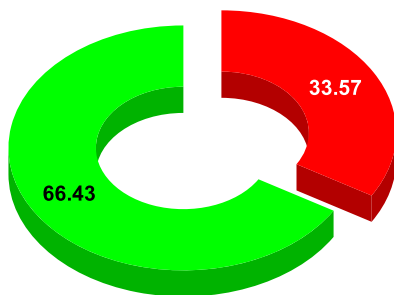
AS ON JULY 2023

85,963

COMPREHENSIVE INDEX

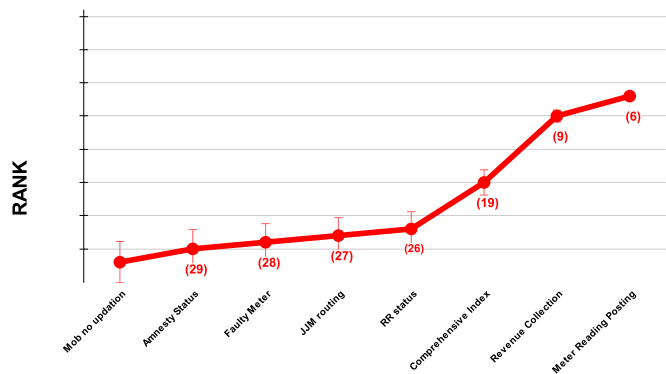
Marks	Total marks	Rank
66.43	100	19

MARKS OBTAINED



● Percent Score to be Achieved ● Percent Score Achieved

DIVISION RANK IN VARIOUS PARAMETERS



COMPREHENSIVE INDEX

REVENUE COLLECTION ACHIEVEMENT

METER READING POSTING

FAULTY METER REPLACEMENT

MOBILE NO UPDATION

REVENUE RECOVERY STATUS

JAL JEEVAN MISSION ROUTING

Marks	Total marks	Rank
66.43	100	19
21.83	25	9
21.00	16	6
12.14	20	28
0.93	10	31
0.54	8	26
9.99	10	27

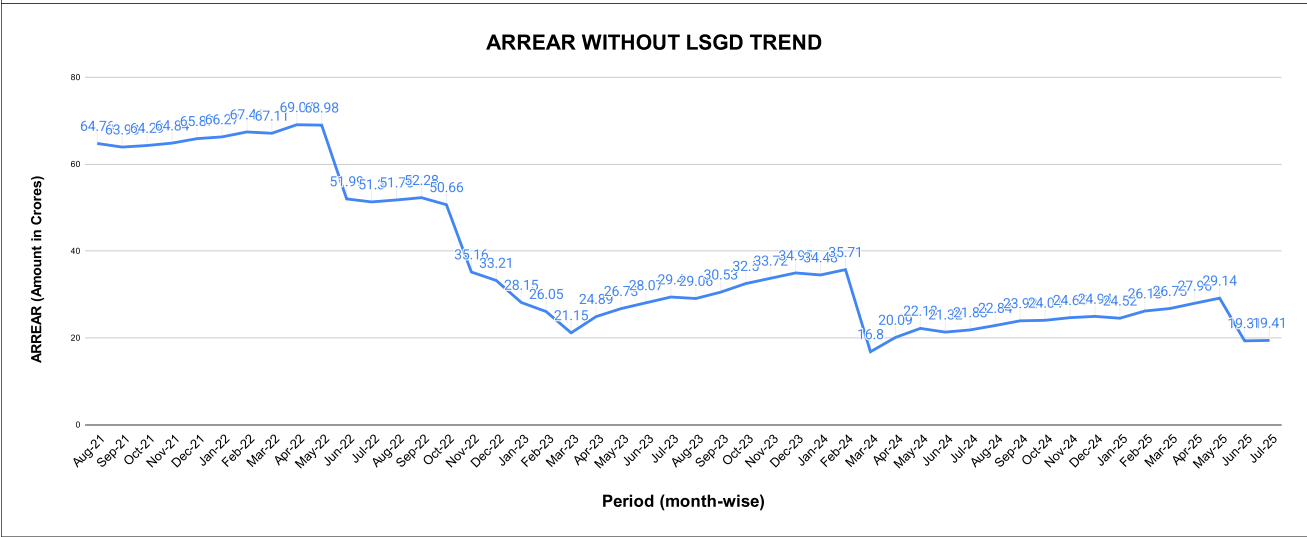
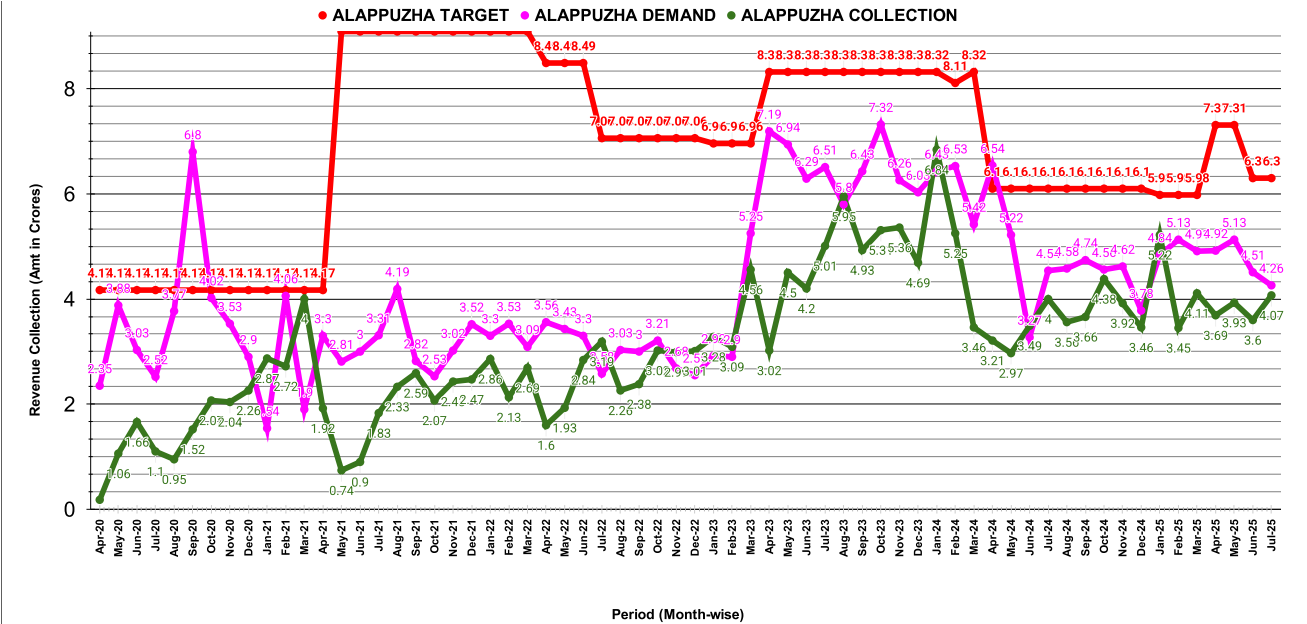
REVENUE COLLECTION ACHIEVEMENT

Marks	Total marks	Rank
21.83	25.00	9

SECTION RANKING

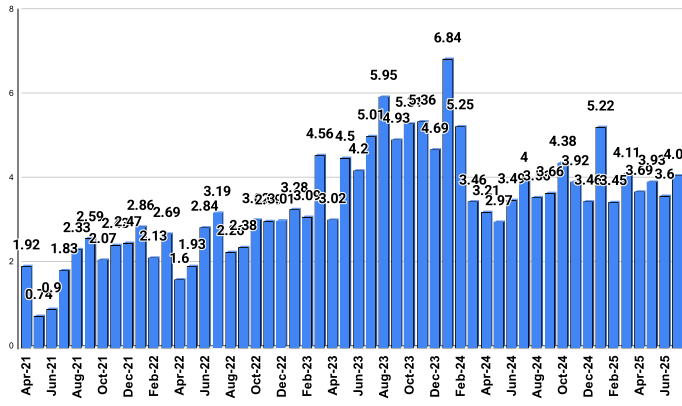
JUNE							JULY					
Rank	SECTION NAME	Opening Balance	Demand	Collection For the Month	% Collection		Rank	SECTION NAME	Opening Balance	Demand	Collection For the Month	% Collection
1	Thycattussery Section	22674844	8523096	8298224	26.60%		1	Thycattussery Section	22354190	6921186	4701518	16.06%
2	Thuravur Section	51221193	10308104	12107389	19.68%		2	Thuravur Section	49336011	12294128	9234410	14.98%
3	Cherthala Section	54812559	10157073	11598949	17.85%		3	Alappuzha WSP Section	73595340	12978419	9152360	10.57%
4	Alappuzha WSP Section	73466609	13297425	13061907	15.05%		4	Cherthala Section	53312791	12830685	6766147	10.23%
5	Alappuzha PH Section	47203806	6111627	6649615	12.47%		5	Alappuzha PH Section	46633040	6237882	4094634	7.74%

SUB-DIVISION RANKING											
JUNE						JULY					
Rank	Sub-Division	Opening Balance	Demand	Collection For the Month	% Collection	Rank	Sub-Division	Opening Balance	Demand	Collection For the Month	% Collection
1	Thycattusserry Sub Dn.	22,674,844	8,523,096	8,829,830	28.30%	1	Thycattusserry Sub Dn.	22,354,190	6,921,186	5,226,943	17.85%
2	Cherthala Sub Dn.	106,033,752	20,465,177	23,706,338	18.74%	2	Cherthala Sub Dn.	102,648,802	25,124,813	16,000,557	12.52%
3	Alappuzha Sub Dn.	120,670,415	19,409,052	19,711,522	14.07%	3	Alappuzha Sub Dn.	120,228,380	19,216,301	13,246,994	9.50%

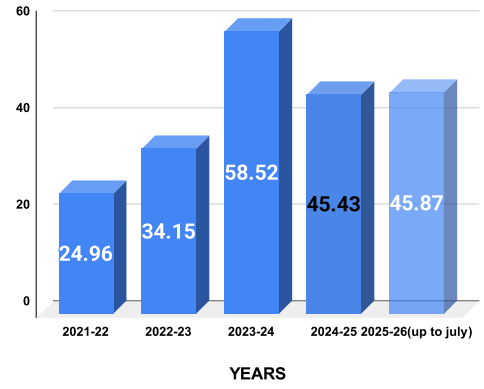


COLLECTION IN LAKHS												
YEAR	April	May	June	July	August	September	October	November	December	January	February	March
2020-21	18.33	105.80	165.99	109.65	95.05	152.30	206.96	203.85	226.43	287.47	271.64	400.42
2021-22	192.06	73.68	90.43	183.31	233.47	259.42	206.89	243.06	246.77	286.12	212.83	268.79
2022-23	159.77	192.54	283.80	319.13	226.32	237.94	302.44	298.92	301.34	328.10	308.60	455.73
2023-24	301.67	450.19	419.79	501.43	595.43	492.93	530.99	536.34	469.24	683.55	525.32	345.70
2024-25	320.86	296.81	348.70	399.56	355.77	365.77	438.42	391.82	345.82	522.48	344.74	410.94
2025-26	368.99	392.75	359.95	407.38								
						YEAR	2020-21	2021-22	2022-23	2023-24	2024-25	2025-26 (up to July)
						COLLECTION IN LAKHS	2,243.91	2,496.82	3,414.64	5,852.58	4,541.70	1,529.06

COLLECTION

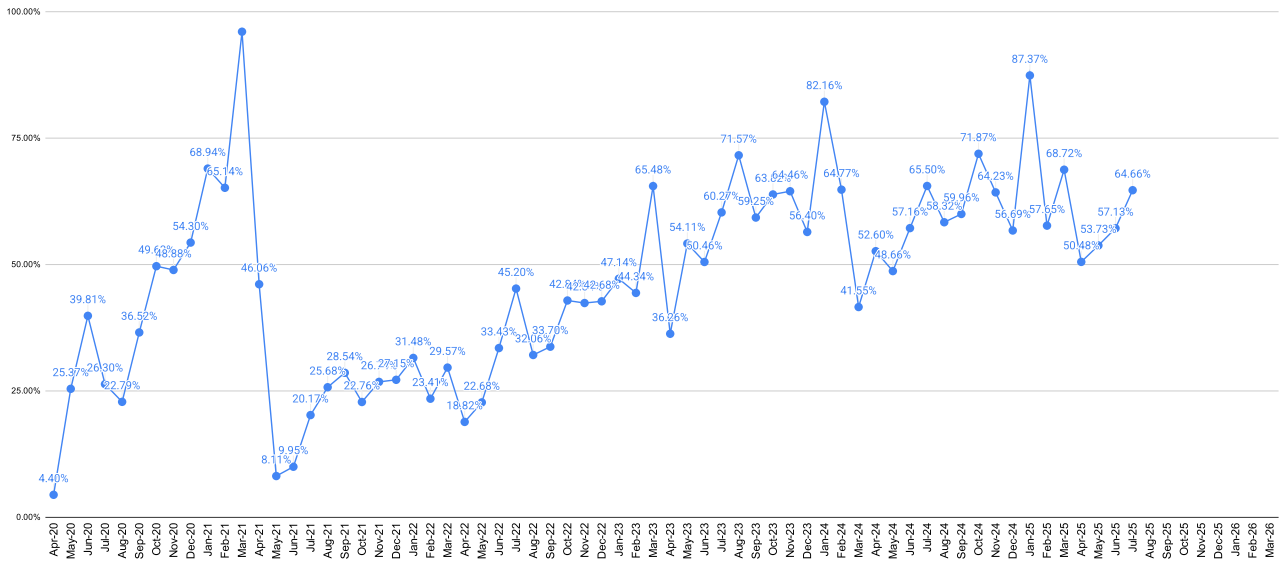


SCORES



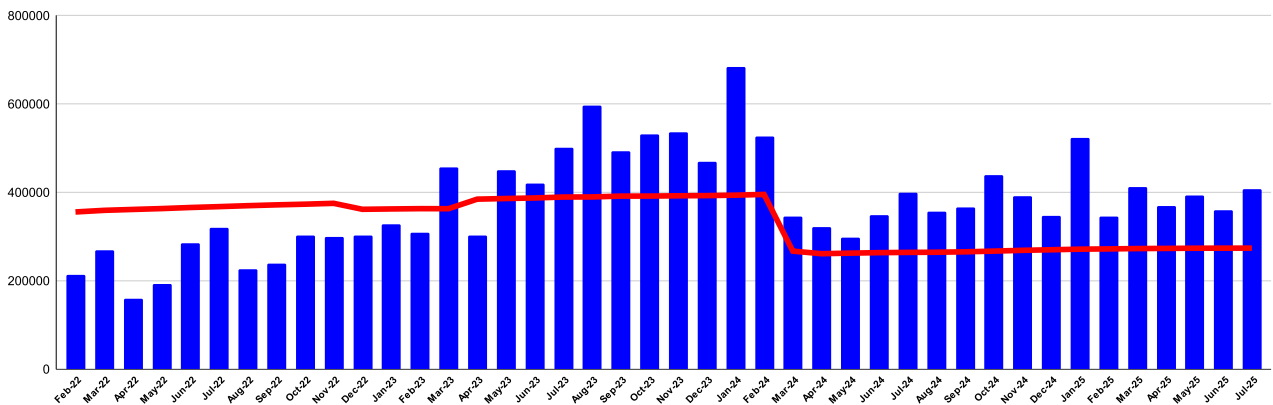
YEARS

REVENUE COLLECTION ACHIEVEMENT IN PERCENTAGE

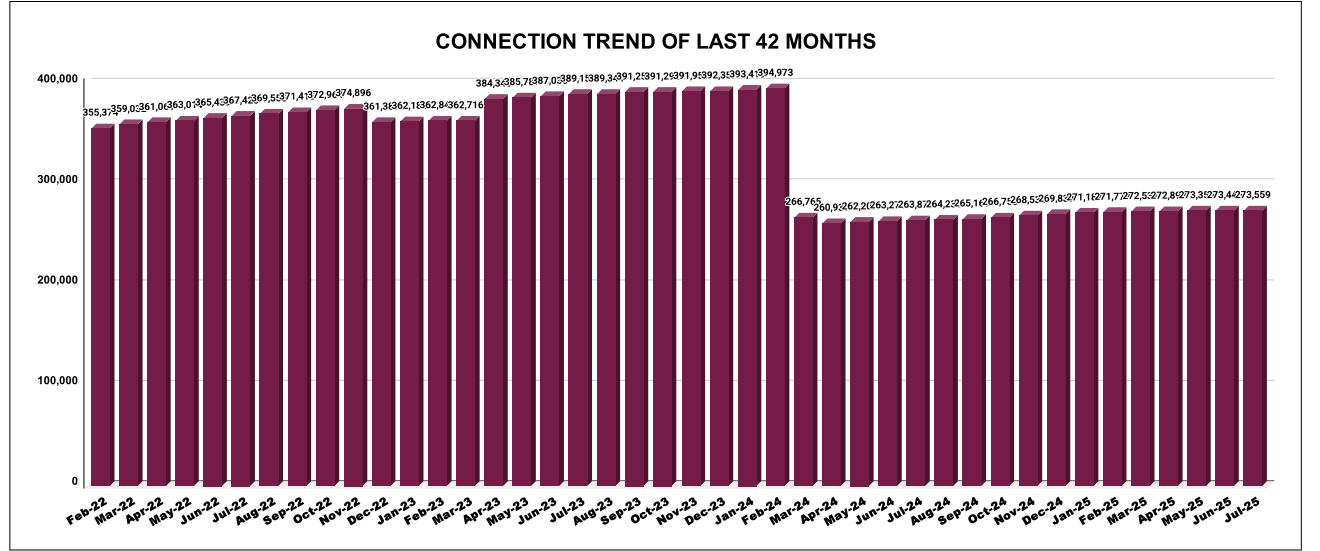


COLLECTIONS VS CONNECTIONS TREND FOR THE LAST 54 MONTHS

■ COLLECTION - CONNECTION



CONNECTION OF LAST 60 MONTHS												
YEAR	April	May	June	July	August	September	October	November	December	January	February	March
2020-21	2,38,591	2,40,144	2,41,510	2,42,182	2,43,223	2,44,766	2,46,204	2,49,129	2,54,860	2,66,410	2,80,280	2,98,637
2021-22	3,10,112	3,16,349	3,24,977	3,29,319	3,32,434	3,36,617	3,39,549	3,43,208	3,48,000	3,52,467	3,55,374	3,59,032
2022-23	3,61,061	3,63,014	3,65,439	3,67,420	3,69,555	3,71,415	3,72,964	3,74,896	3,61,389	3,62,188	3,62,848	3,62,716
2023-24	3,84,345	3,85,787	3,87,035	3,89,158	3,89,344	3,91,258	3,91,292	3,91,951	3,92,357	3,93,413	3,94,973	2,66,765
2024-25	2,60,939	2,62,207	2,63,270	2,63,879	2,64,238	2,65,169	2,66,753	2,68,535	2,69,839	2,71,187	2,71,772	2,72,531
2025-26	2,72,892	2,73,355	2,73,446	2,73,559								

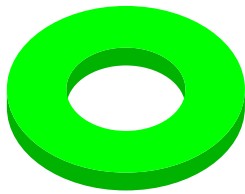


METER READING POSTING	Marks	Total marks	Rank
	21.00	16	6

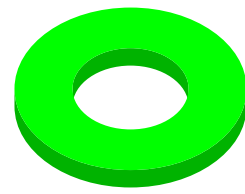
Total No. of Live connection on February	Total No. of readings posted on February	Total Readings of February against 50% Total Live Connections of February 25
267,420	135,964	101.69%
Total No. of Live connection on April	Total No. of readings posted on April	Total Readings of April against 50% Total Live Connections of April 25
268,561	136,957	101.99%
Total No. of Live connection on June	Total No. of readings posted on June	Total Readings of June against 50% Total Live Connections of June 25
267,164	136,775	102.39%

Total No. of Live connection on March	Total No. of readings posted on March	Total Readings of March against 50% Total Live Connections of March 25
266,924	134,075	100.46%
Total No. of Live connection on May	Total No. of readings posted on May	Total Readings of May against 50% Total Live Connections of May 25
267,282	134,205	100.42%
Total No. of Live connection on July	Total No. of readings posted on July	Total Readings of July against 50% Total Live Connections of July 25
267,158	133,984	100.30%

METER READING POSTING % AGAINST NUMBER OF LIVE CONNECTIONS OF FEBRUARY

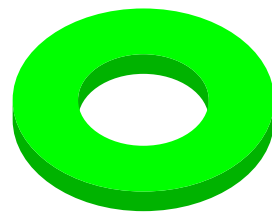
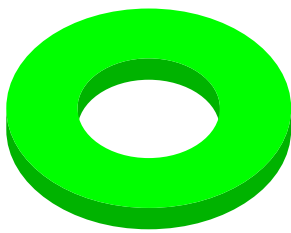


METER READING POSTING % AGAINST NUMBER OF LIVE CONNECTIONS OF MARCH



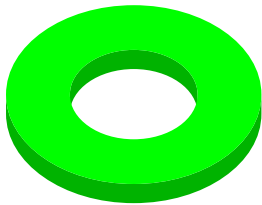
● METER READINGS POSTED

METER READING POSTING % AGAINST NUMBER OF LIVE CONNECTIONS OF APRIL



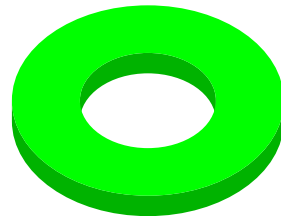
● METER READINGS POSTED

METER READING POSTING % AGAINST NUMBER OF LIVE CONNECTIONS OF JUNE

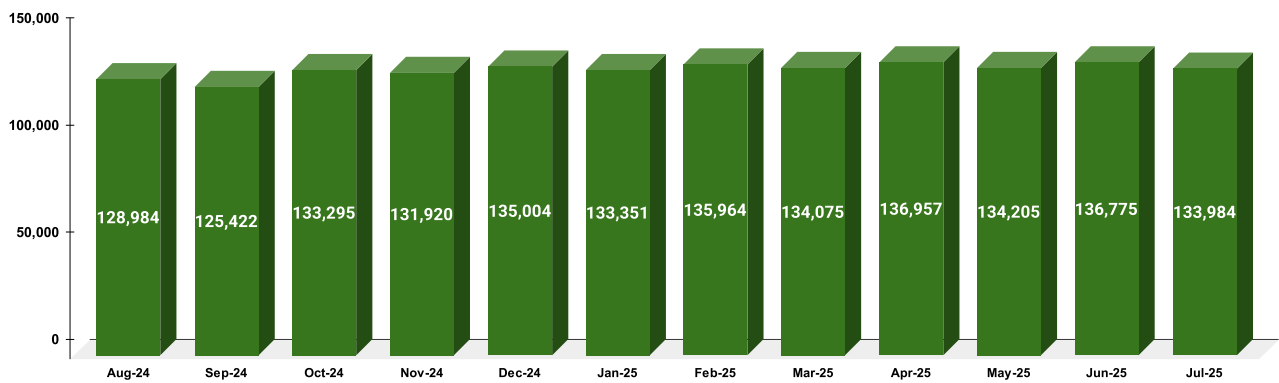


● METER READINGS POSTED

METER READING POSTING % AGAINST NUMBER OF LIVE CONNECTIONS OF JULY



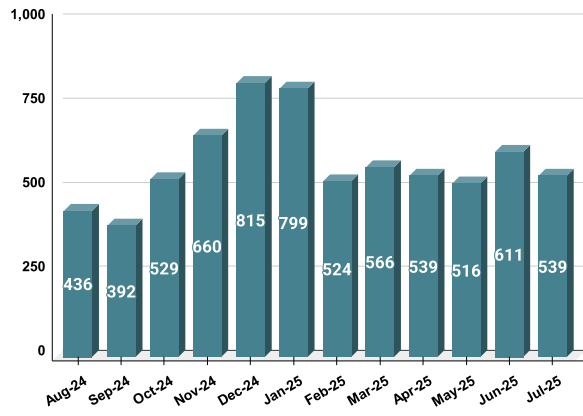
METER READING POSTED FOR LAST 12 MONTHS



FAULTY METER

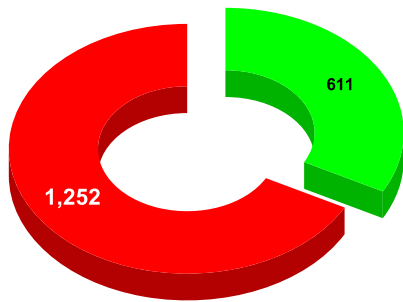
Marks	Total marks	Rank
12.14	20	28

FAULTY METER REPLACEMENT OF LAST 12 MONTHS



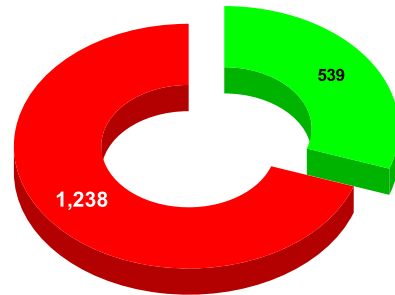
MONTH	Total No.of Faulty meters	Number of Faulty meter replaced	Number of Faulty meter pending
FEBRUARY	2,037	524	1,513
MARCH	1,930	566	1,364
APRIL	2,059	539	1,520
MAY	2,129	516	1,613
JUNE	1,863	611	1,252
JULY	1,777	539	1,238

FAULTY METER REPLACED VS FAULTY METER TO BE REPLACED ON JUNE



- NO OF FAULTY METERS REPLACED
- FAULTY METERS TO BE REPLACED

FAULTY METER REPLACED VS FAULTY METER TO BE REPLACED ON JULY



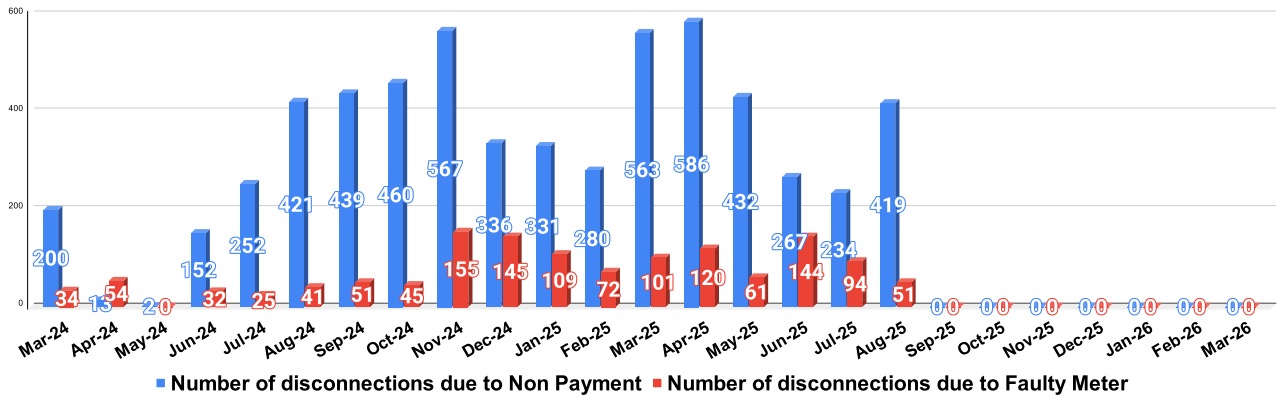
- NO OF FAULTY METERS REPLACED
- FAULTY METERS TO BE REPLACED

DISCONNECTION STATUS

Marks	Total marks	Rank
-	-	-

DISCONNECTI ONS	APRIL	MAY	JUNE	JULY	AUGUST	SEPTEMBER	OCTOBER	NOVEMBER	DECEMBER	JANUARY	FEBRUARY	MARCH
DUE TO NON PAYMENT ()	13	2	152	252	421	439	460	567	336	331	280	563
DUE TO FAULTY METER)	54	0	32	25	41	51	45	155	145	109	72	101
DUE TO NON PAYMENT()	586	432	267	234	419	0	0	0	0	0	0	
DUE TO FAULTY METER()	120	61	144	94	51	0	0	0	0	0	0	

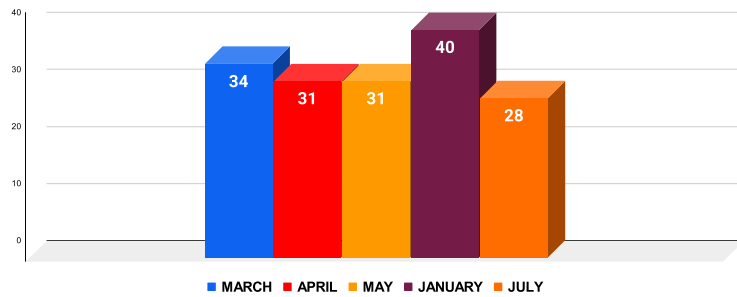
NUMBER OF DISCONNECTIONS DUE TO NON PAYMENT VS DUE TO FAULTY METERS



MOBILE NUMBER UPDATION

Marks	Total marks	Rank
0.93	10	31

MOBILE NUMBER UPDATION PENDING



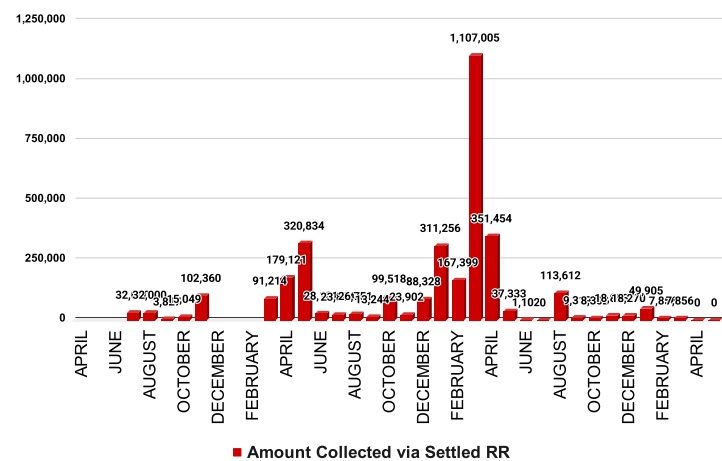
Mobile Number updation pending

MARCH	APRIL	MAY	JUNE	JULY
34	31	31	40	28

REVENUE RECOVERY STATUS

Marks	Total marks	Rank
0.54	8	26

AMOUNT COLLECTED VIA SETTLED RR OF PREVIOUS MONTHS



MONTH	No of RR Notices Issued	No of RR Proceed	No Of RR Settled	Amount Collected via Settled RR
DECEMBER	461	0	4	18,270
JANUARY	440	0	4	49,905
FEBRUARY	318	0	2	7,856
MARCH	532	151	0	0
APRIL	496	60	2	8,305
MAY	145	61	3	21,018

