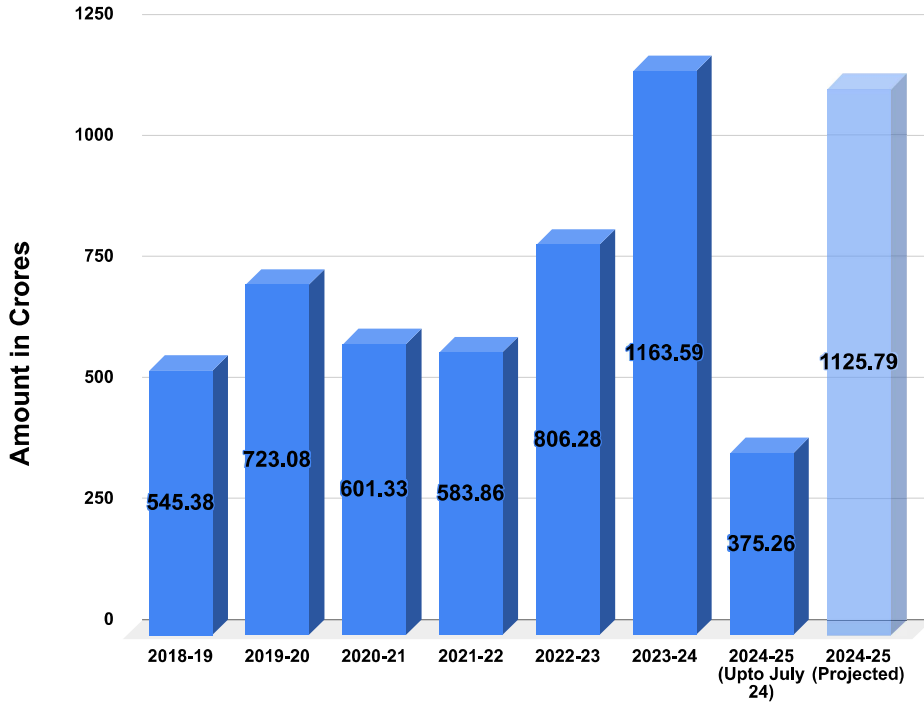




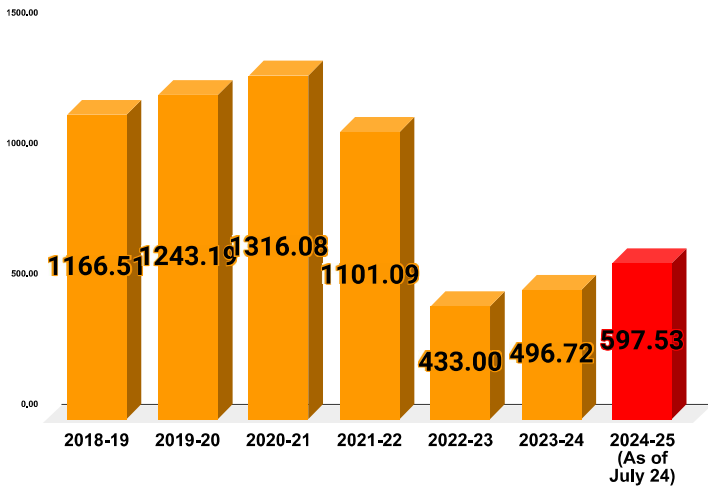
REVENUE PROFILE FOR JULY 2024

Total Revenue Collection including LSGD

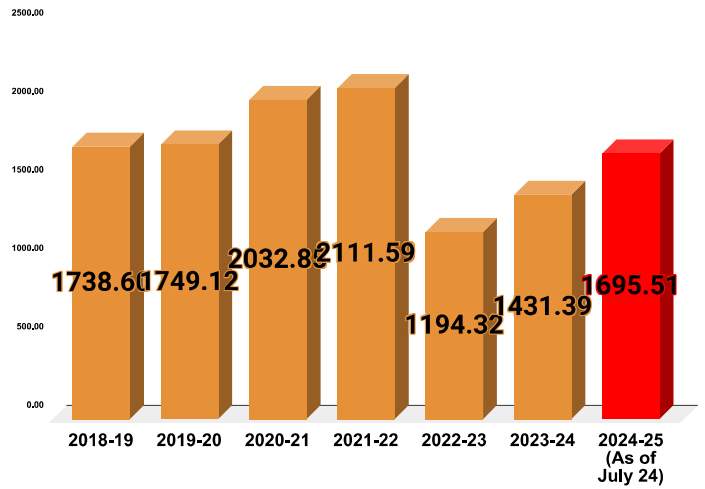


ARREAR TREND ANALYSIS OF LAST FIVE YEARS

ARREAR (WITH OUT LSGD) OF LAST SIX YEARS

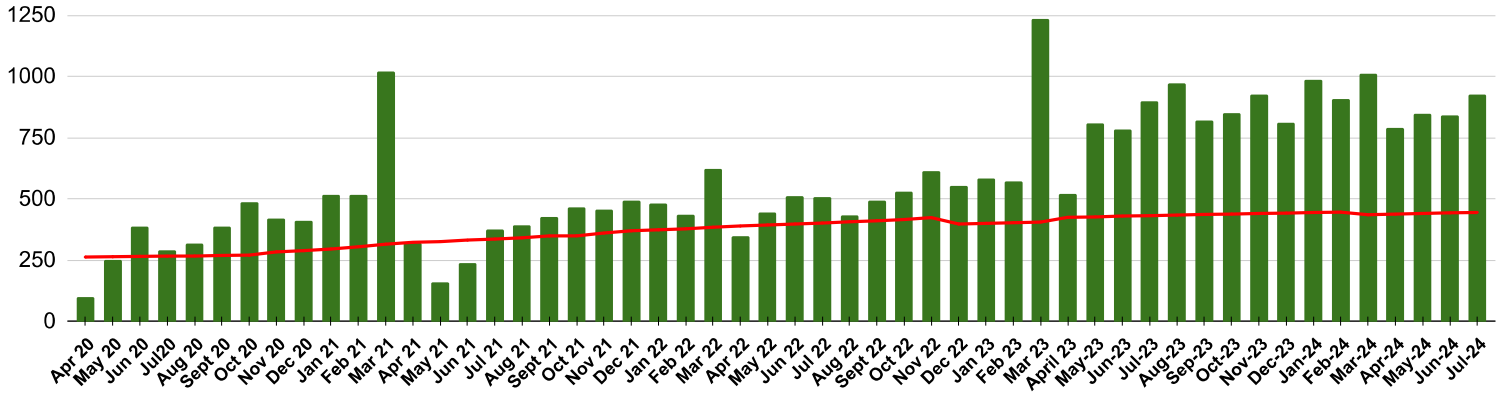


ARREAR (WITH LSGD) OF LAST SIX YEARS



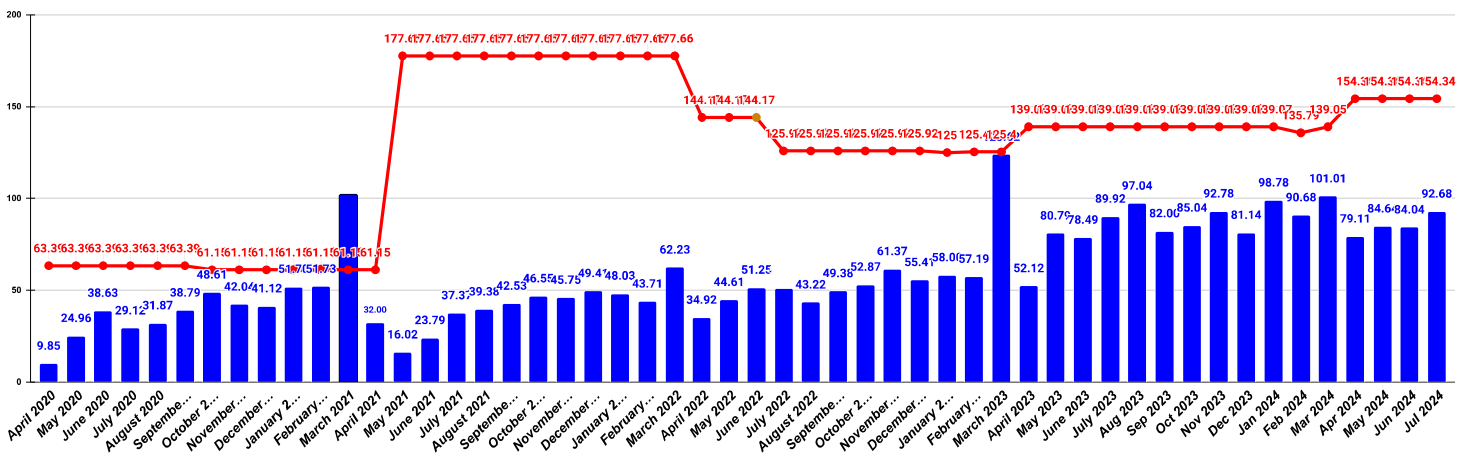
COLLECTION IN CRORE VS CONNECTION IN LAKH

■ COLLECTION OF LAST 52 MONTHS IN MILLION ● CONNECTION OF LAST 52 MONTHS IN LAKH

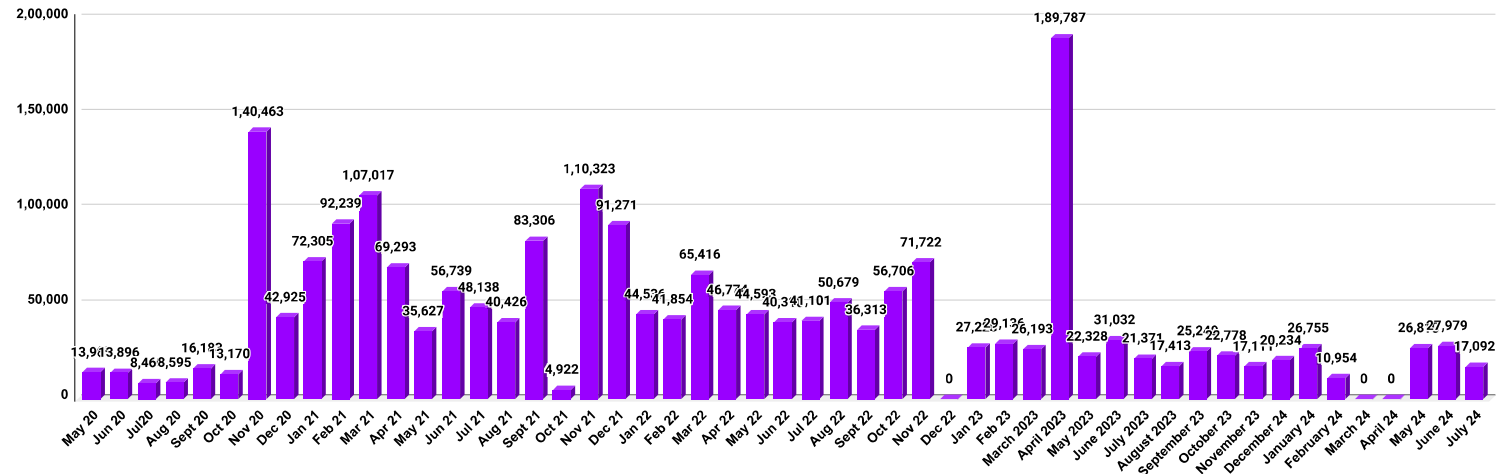


TOTAL REVENUE COLLECTION OF LAST 52 MONTHS IN CRORE

■ REVENUE COLLECTION ● TARGET



NEW CONNECTIONS TREND

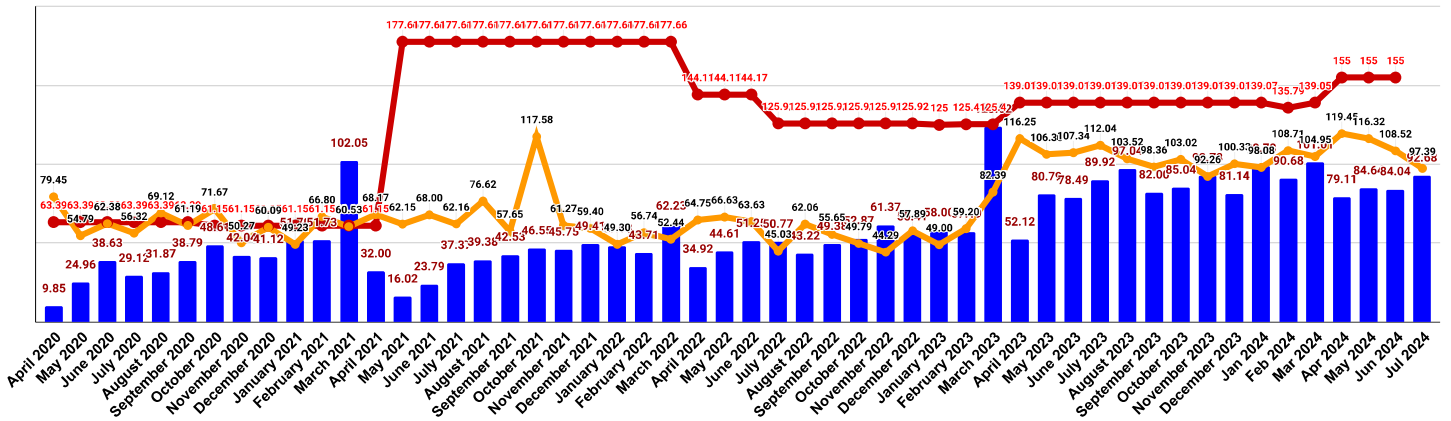


COLLECTION (excld LSGD) IN CRORE OF LAST 52 MONTHS

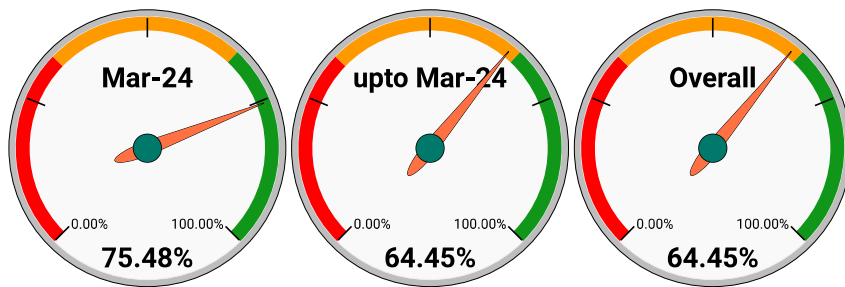
YEAR	April	May	June	July	August	September	October	November	December	January	February	March
2020-21	9.85	24.96	38.63	29.12	31.87	38.79	48.61	42.04	41.12	51.70	51.73	102.05
2021-22	32.00	16.02	23.79	37.37	39.38	42.53	46.55	45.75	49.41	48.03	43.71	62.23
2022-23	34.92	44.61	51.25	50.77	43.22	49.38	52.87	61.37	55.41	58.49	57.19	123.62
2023-24	52.12	80.79	78.49	89.92	97.04	82.00	85.04	92.78	81.14	98.78	90.68	101.01
2024-25	79.11	84.64	84.04	92.68								

TOTAL REVENUE COLLECTION, TARGET AND DEMAND (in crores) WITH OUT LSGD

■ REVENUE COLLECTION ● TARGET ● DEMAND



Revenue Targets & Achievements for the year 2023-24

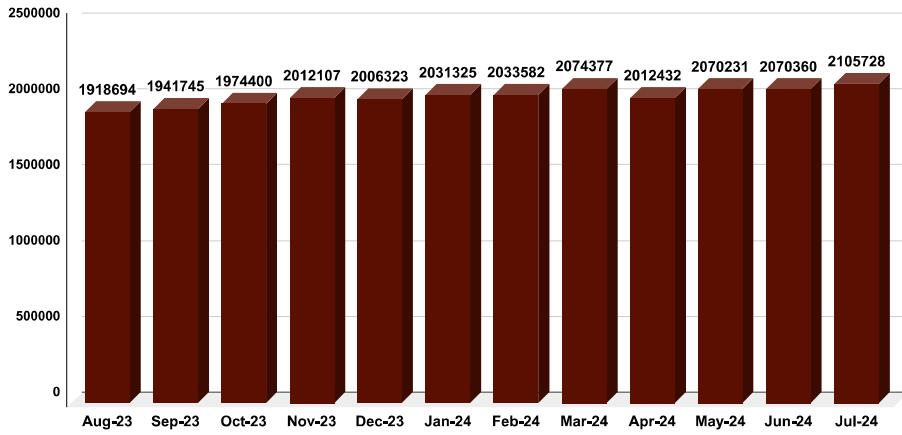


Previous 5 year Target Achievement



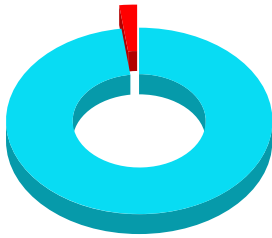
METER READING POSTING

METER READING TAKEN FOR LAST 12 MONTHS



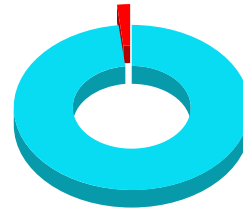
Total No. of Live connection on February	Total No. of readings posted on February	Total Readings of February against 50% Total Live Connections of February 24
41,55,478	20,33,582	97.87%
Total No. of Live connection on March	Total No. of readings posted on March	Total Readings of March against 50% Total Live Connections of March 24
42,23,757	20,74,377	98.22%
Total No. of Live connection on April	Total No. of readings posted on April	Total Readings of April against 50% Total Live Connections of April 24
41,34,594	20,12,432	97.35%
Total No. of Live connection on May	Total No. of readings posted on May	Total Readings of May against 50% Total Live Connections of May 24
42,54,671	20,70,231	97.32%
Total No. of Live connection on June	Total No. of readings posted on June	Total Readings of June against 50% Total Live Connections of June 24
42,47,366	20,70,360	97.49%
Total No. of Live connection on July	Total No. of readings posted on July	Total Readings of July against 50% Total Live Connections of July 24
42,90,624	21,05,728	98.15%

READINGS POSTED IN FEBRUARY 2024 AGAINST 50% LIVE CONNECTIONS OF FEBRUARY 2024



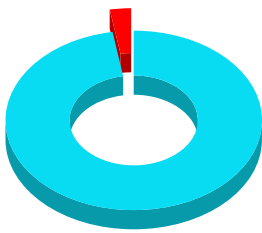
- Total Readings of Feb against 50% Live Connections of Feb 2024
- Meter Readings to be posted

READINGS POSTED IN MARCH 2024 AGAINST 50% LIVE CONNECTIONS OF MARCH 2024



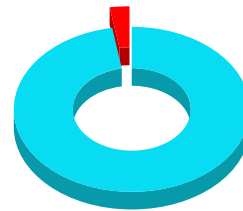
- Total Readings of Mar against 50% Live Connections of Mar 2024
- Meter Readings to be posted

READINGS POSTED IN APRIL 2024 AGAINST 50% LIVE CONNECTIONS OF APRIL 2024



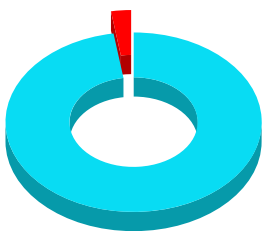
- Total Readings of Apr against 50% Live Connections of Apr 2024
- Meter Readings to be posted

READINGS POSTED IN MAY 2024 AGAINST 50% LIVE CONNECTIONS OF MAY 2024



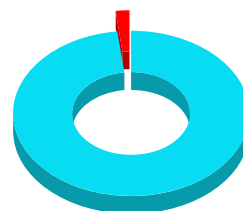
- Total Readings of May against 50% Live Connections of May 2024
- Meter Readings to be posted

READINGS POSTED IN JUNE 2024 AGAINST 50% LIVE CONNECTIONS OF JUNE 2024



- Total Readings of June against 50% Live Connections of June 2024
- Meter Readings to be posted

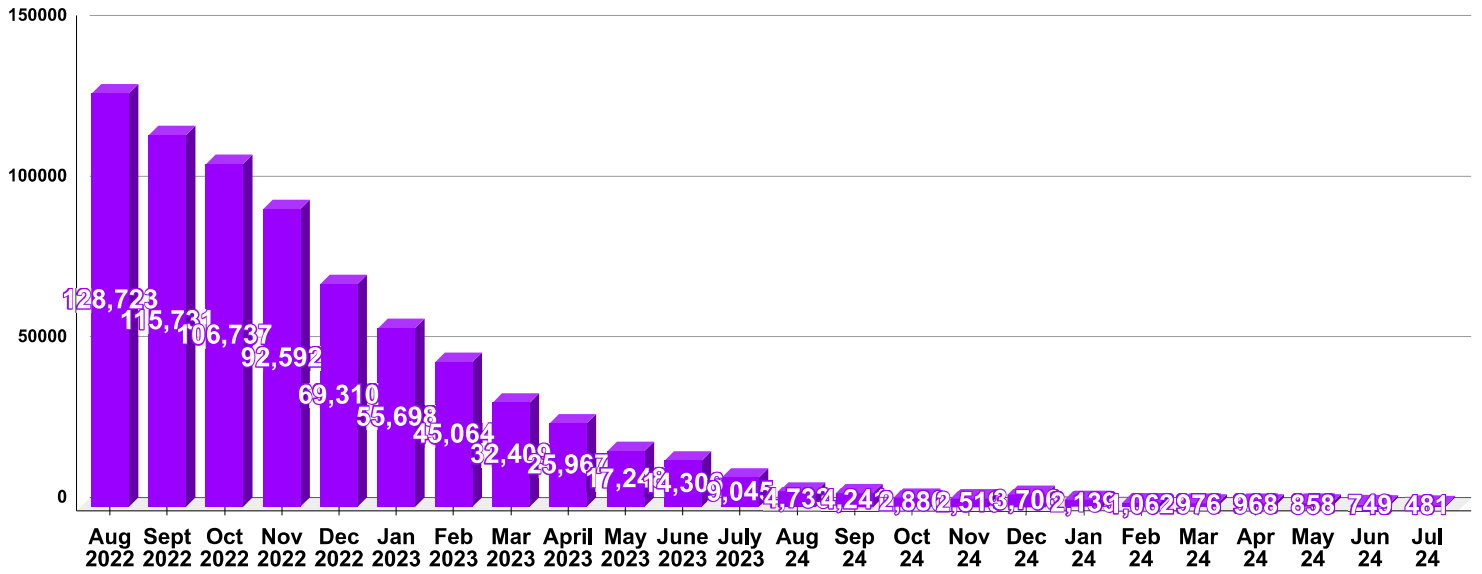
READINGS POSTED IN JULY 2024 AGAINST 50% LIVE CONNECTIONS OF JULY 2024



- Total Readings of July against 50% Live Connections of July 2024
- Meter Readings to be posted

MOBILE NUMBER UPDATION PENDING

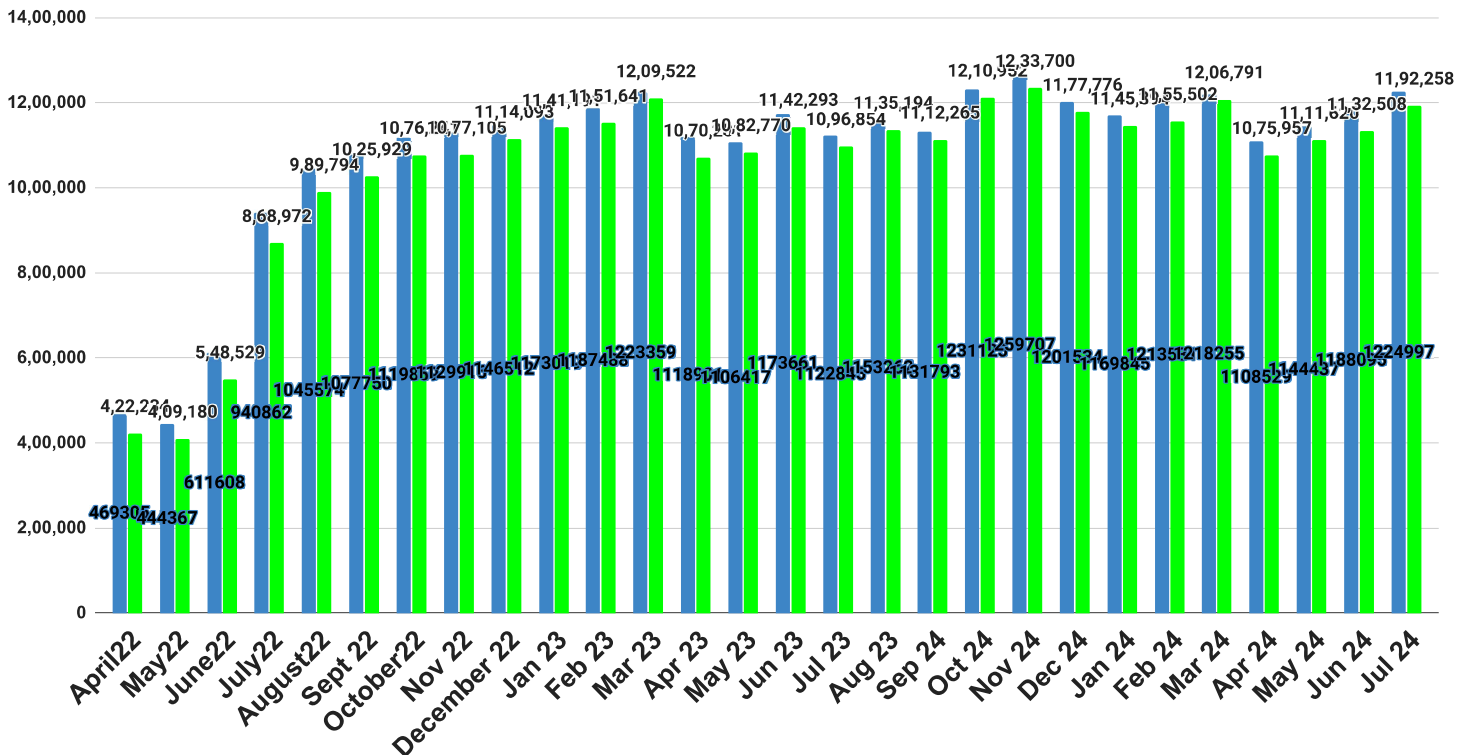
MOBILE NUMBER UPDATION PENDING



TVM NORTH, TVM SOUTH, NEYATTINKARA, ARUVIKKARA, PATHANAMTHITTA, KOTTAYAM, KADUTHURUTHY, THODUPUZZHA, PAINAV, P H KOCHI, W S KOCHI, THRISSUR, IRINJALAKKUDA, EDAPPAL, KOZHIKKOD, VATAKARA, SULTHAN BATHERY, KANNUR, THALIPARAMBA achieved 100% Mob No Updation

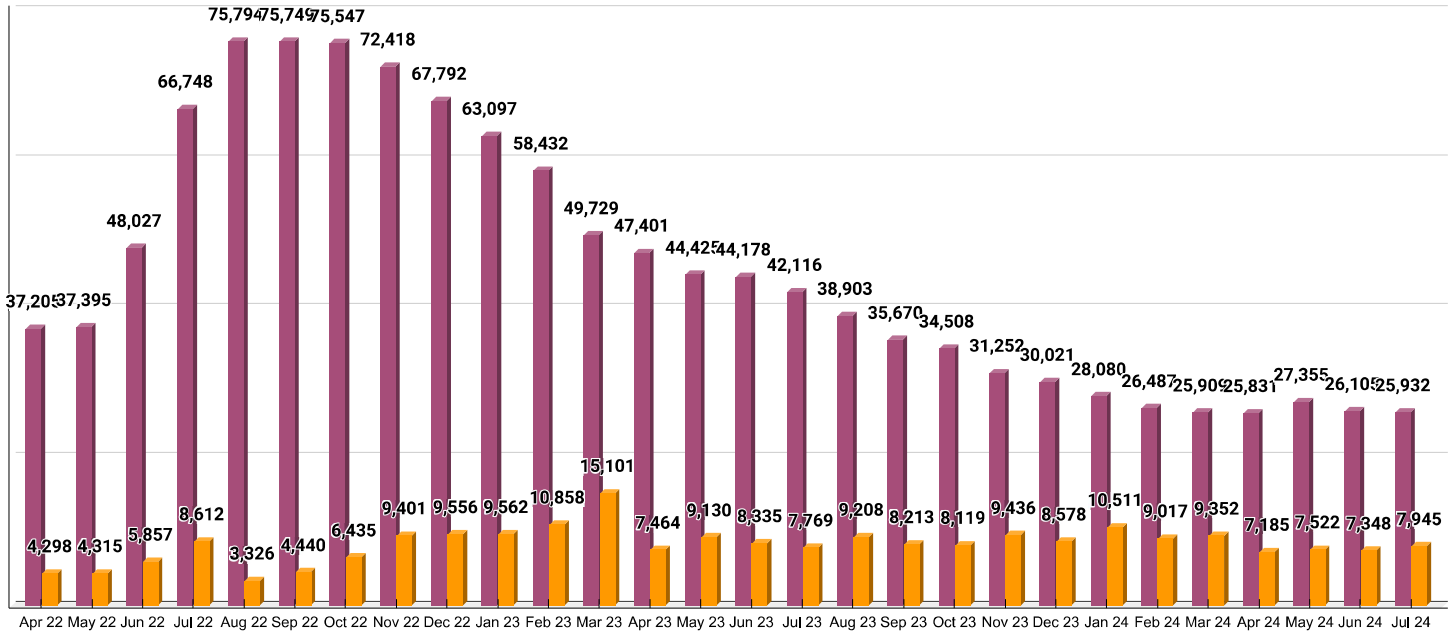
JAL JEEVAN MISSION ROUTING

■ Total No of JJM Connection ■ No of connection routed in e-Abacus



TOTAL NO OF FAULTY METERS VS FAULTY METER REPLACED

■ Total No.of Faulty meters ■ Number of Faulty meter replaced



DISCONNECTION

■ Number of disconnections due to Non Payment ■ Number of disconnections due to Faulty Meter

