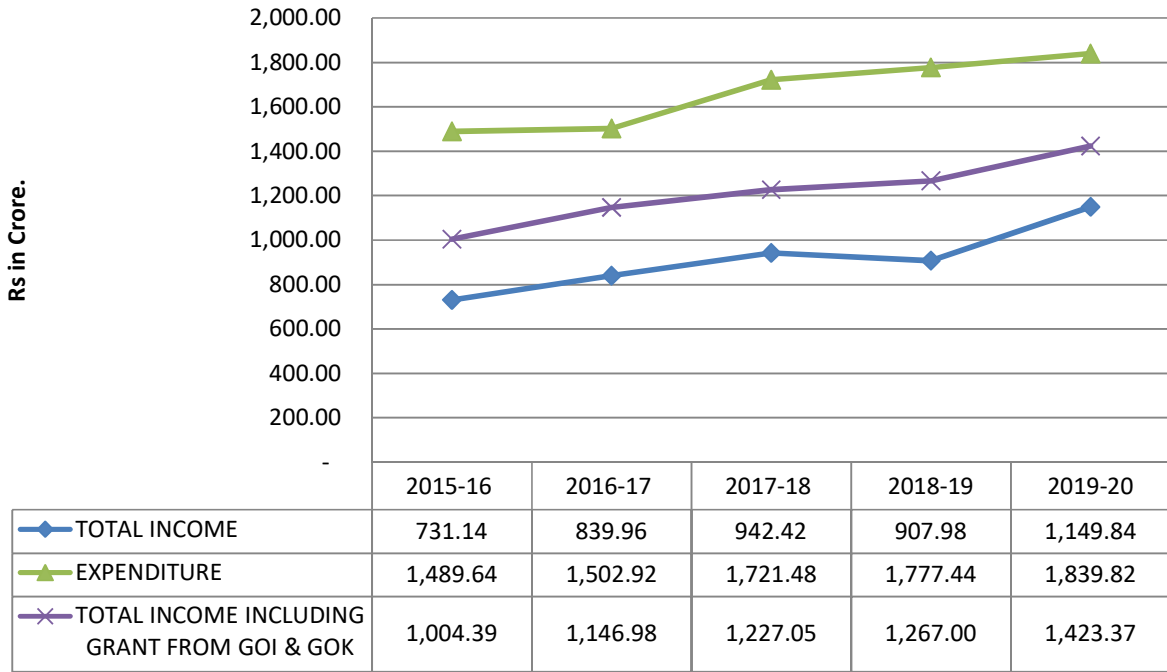
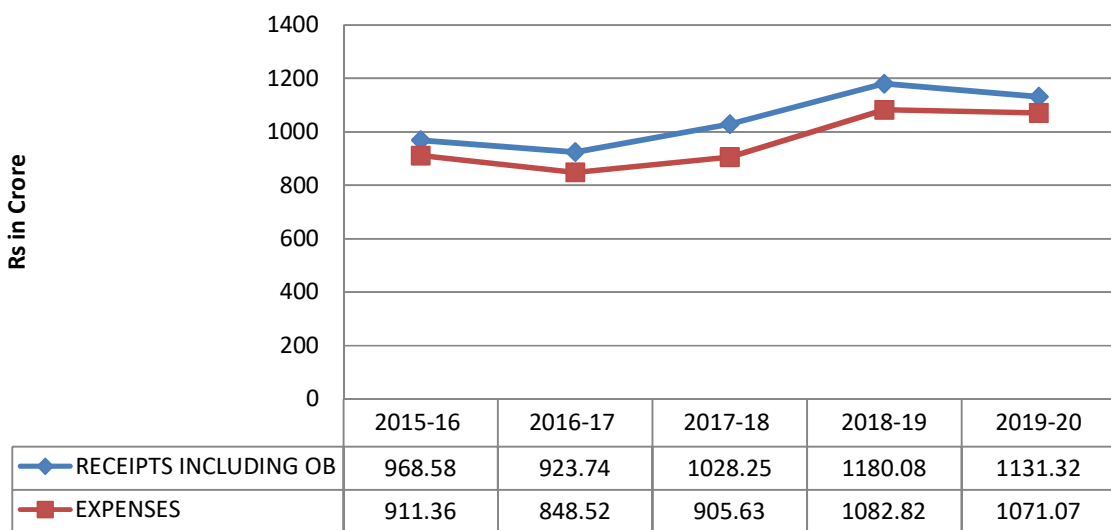


### KERALA WATER AUTHORITY INCOME AND EXPENDITURE



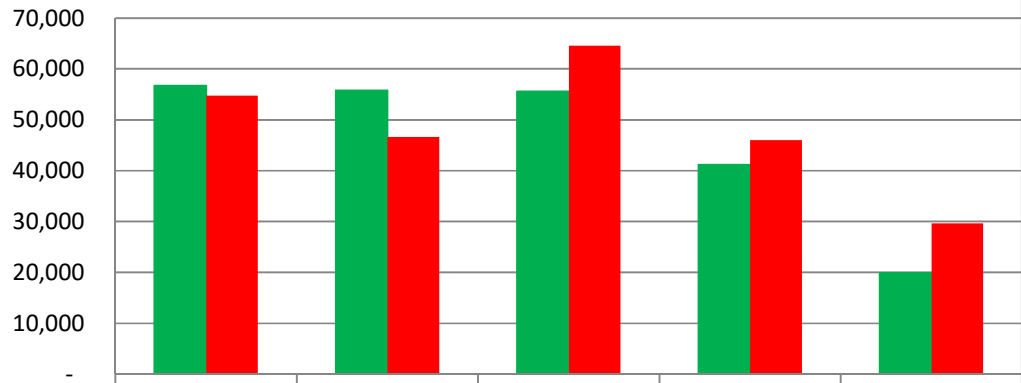
Note : KSEB dues taken over by GoK during 2015-16 and 2018-19 and prior period adjustment were not considered for the above calculation.

### KERALA WATER AUTHORITY RECEIPTS AND PAYMENTS



**KERALA WATER AUTHORITY  
CAPITAL RECEIPTS AND CAPITAL EXPENDITURE**

Rs in Lakhs



	2015-16	2016-17	2017-18	2018-19	2019-20
■ CAPITAL RECEIPTS	56,724	55,796	55,564	41,156	19,873
■ CAPITAL EXPENDITURE	54,770	46,595	64,539	45,988	29,651

Note : Excess Expenditure met from Opening Balance and from own fund of KWA